

---

## IEF-Werner Enlarges its Servo Press Series aiPRESS with the Joining Module JM: Simple to Highly Complex

---

Press Contact  
IEF-Werner GmbH  
Stefanie Günter  
Wendelhofstr. 6  
78120 Furtwangen  
Tel. +49 7723/925-118  
[stefanie.guenter@ief-werner.de](mailto:stefanie.guenter@ief-werner.de)  
[www.ief.de](http://www.ief.de)

Agency  
a1kommunikation Schweizer GmbH  
Dr. Matthias Schweizer  
Tel. +49 711/9454161-0  
[info@a1kommunikation.de](mailto:info@a1kommunikation.de)  
[www.a1kommunikation.de](http://www.a1kommunikation.de)

IEF-Werner enlarges its servo press series aiPRESS with a joining module:

## Simple to Highly Complex

“JM” is short for Joining Module and is the abbreviation for the new version of the proven servo press series aiPRESS. The user can adapt the outreach to the application; he is able to install it vertically or upside down and for example attach it to turning tables, sliding tables or to clocked systems. The component is available in three sizes like the basic series. Simple as well as highly complex joining processes can be realised fast and effectively with this IEF solution.

Furtwangen, 20.08.2019 – The users now receive a servo motoric joining module aiPRESS JM which offers even more possibilities. The joining module aiPRESS JM is available in the three known sizes of the basic series: with 5 kilonewton and 75 millimetres stroke, 15 kilonewton and 125 millimetres stroke as well as 36 kilonewton and 175 millimetres stroke. The maximum speed is 150 millimetres per second.

The joining modules can be used in any desired mounting position, for example upside down, vertically or horizontally. The client may connect them to the machine control via interface to the usual control systems or simply via the process control aiQ-CONTROL of IEF-Werner. This makes it possible to completely monitor and control the pressing or joining processes as well as it ensures a high degree of flexibility for simple to highly complex operations.

The JM joining modules are especially suited for fully automated handling and assembly lines – for example as joining station within a posyART transport system of IEF-Werner or as manual workplace with special demands like a c-frame with large opening or deep outreach. The modules consist of standard components which are in stock. Thereby the automation specialist ensures a fast delivery and spare and wear parts are obtainable. The client profits also from the different software functions, like the optional wear and maintenance display.

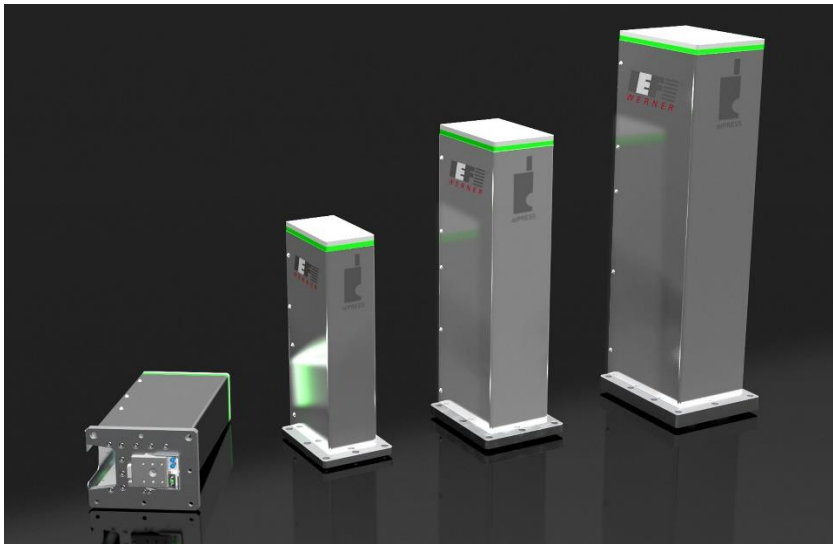
1.988 characters incl. blanks

**Meta-Title:** IEF-Werner enlarges servo press series aiPRESS with joining module

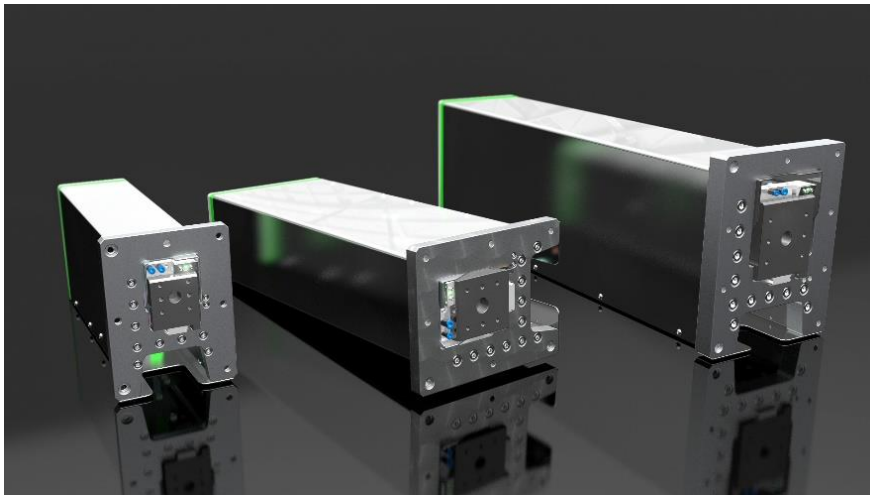
**Meta-Description:** IEF-Werner developed a new version of the proven servo press series aiPRESS. The user is even more flexible with the joining modules.

**Keywords:** IEF-Werner; Automation; Servo Press aiPRESS; JM; Joining Modules; Presses; Modular; Kit; Diverse Interfaces and Controls; C-Frames; 3- or 4-Pillar Set

## Captions:



Picture 1: The user can adapt the outreach of the aiPRESS Joining Modules simply to the application, install it vertically or upside down and connect it to the IEF-transport system posyART.



Picture 2: The joining modules are available in the known force areas of the basic series: up to 3 kN, up to 15 kN and up to 36 kN.



Picture 3: The joining modules can be used in any desired mounting position, for example as joining station within a posyART transport system.

Pictures: IEF-Werner GmbH