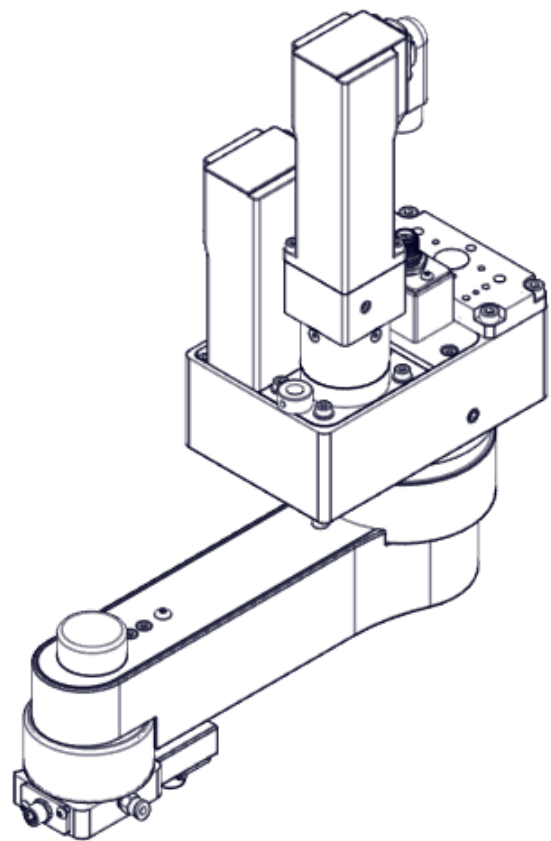




Parts lists and drawings



rotaryARM

This documentation is intended only for the operating company and its personnel. The copyright of this documentation is owned by IEF-Werner GmbH. The content (texts, figures, drawings, graphics, plans, etc.) may not be reproduced or distributed, as a whole or in part, in printed or electronic form, without our prior written consent. This also applies to the unauthorized use for competition purposes or handing over and making accessible to third parties. All drawings, sketches and figures are the property of IEF-Werner GmbH. All rights reserved. Subject to change without notice.

IEF-Werner GmbH
Wendelhofstraße 6
Germany-78120 Furtwangen
Telephone: +49 7723-925-0
info@ief-werner.de

Table of contents

1 About this document.....	4
1.1 Customer service department.....	4
1.2 Change history.....	4
1.3 Other applicable documents	4
2 Parts lists	5
2.1 Swivel arm module type: rotaryARM	5
2.2 Rotary feedthrough (part no. 1322524)	9
3 Drawings	10
3.1 1800216_Schwenkarmmodule Swivel arm module.pdf.....	11
3.2 1322524_Drehdurchführung Rotary feed-through.pdf	18

1 About this document

The parts lists and drawings in this document are a general representation. Specific parts (engine, gear unit, ...) are order-dependent and may vary.

Only order spare parts using the specific spare parts list supplied with the product.

1.1 Customer service department

In case of questions or problems, please contact our customer service:

IEF-Werner GmbH

Wendelhofstr. 6, 78120 Furtwangen, Germany

Telephone: +49 7723 / 925 - 222, E-mail: service@ief-werner.de

1.2 Change history

Version	Date	Changes
01	February 2026	First edition

1.3 Other applicable documents

Important documents can be downloaded from our homepage:
<https://www.ief.de/produkte/komponenten/schwenkantriebe>.

The documentation for this product includes:

- the instructions (see homepage).
- the declaration of incorporation / UKCA Declaration of Incorporation (see homepage)
- the specific spare and wear parts list enclosed with the product.
- the models, parts lists and drawings (see homepage).
- the documentation of the installed supplier components.

2 Parts lists

The parts lists and drawings in this document are a general representation. Specific parts (engine, gear unit, ...) depend on the order and may vary.

Only order spare parts using the specific spare parts list supplied with the product.

2.1 Swivel arm module type: rotaryARM

Pos.	Part no.	Designation 1	Designation 2	Quantity	Unit	Spare part (S) / wear part (W)	depending on order
10	1452581	Housing		1	Pcs		
20	1456275	Swivel arm R199		1	Pcs		X
30	1452576	Swivel arm R268		1	Pcs		X
50	1452578	Cover plate R199		1	Pcs		X
60	1452580	Cover plate R268		1	Pcs		X
80	1452582	Cover R199		1	Pcs		X
90	1452584	Cover R268		1	Pcs		X
110	1322524	Rotary feedthrough, cpl.		1	Pcs	S	X
120	1452591	Motor plate		1	Pcs		
130	1452607	Cover plate		1	Pcs		
140	1452592	Cover		1	Pcs		
150	1452593	Rotary feedthrough arm		1	Pcs		
160	1452589	Toothed lock washer Al 19 AT3/46-0		1	Pcs	W	
170	1452594	Flange		1	Pcs		
180	1455387	Cover		1	Pcs		
190	1452590	Holder		1	Pcs		
200	1452597	Screw		1	Pcs		
210	1046137	Toothed lock washer St 15 AT3/23-2		1	Pcs	W	
220	1605540	Gear unit	Type: HFUS-17-50-2UH-SP	1	Pcs	W	
230	1052740	Clamping set	Type: N 816K	1	Pcs	S	
240	1111349	Toothed belt	Type: 10AT3/252 GEN III	0	Pcs	W	X
250	1605932	X-ring – NBR – 70° Shore A	Type: 56.87–1.78	3	Pcs	W	
260	1021045	O-ring – NBR – 70° Shore A	Type: 4-1.00	0	Pcs	W	X
270	736418	Push-in fitting	Type: QSM-M5-4	2	Pcs		
280	731915	Push-in L-fitting	Type: QSML-M5-4	2	Pcs		

Pos.	Part no.	Designation 1	Designation 2	Quantity	Unit	Spare part (S) / wear part (W)	de- pend- ing on order
290	1452599	Toothed lock washer Al 14 AT3/34-2		0	Pcs	W	X
300	1452598	Shaft		0	Pcs		X
310	1453069	Tensioning piece		0	Pcs		X
320	1605356	Knife edge roller	Type: P210RLM-0409-12	0	Pcs	S	X
330	1600511	Pass shoulder screw	Type: ISO 7379 - 4 - M3 x 12 - f9 - 12.9 burnished	0	Pcs		X
340	1111348	Toothed belt	Type: 10AT3/501 GEN III	0	Pcs	W	X
350	1110674	Toothed belt	Type: 10AT3/639 GEN III	0	Pcs	W	X
370	626900	Deep groove ball bearing - 12 mm x 28 mm x 8 mm	Type: DIN 625-6001-2RS	0	Pcs	W	X
380	732769	Clamping set	Type: PSV 2061 12x22	0	Pcs	S	X
390	626062	Cheese head screw	Type: DIN 912 / ISO 4762 - M4 x 12 - 8.8 galv.	0	Pcs		X
400	1452612	Rigid rotary feedthrough		1	Pcs		X
410	1452600	Adapter plate PLE40		1	Pcs		X
420	1452602	Toothed lock washer Al 15 AT3/56-0		1	Pcs	W	X
430	1452601	Toothed lock washer Al 15 AT3/28-2		1	Pcs	W	X
440	1406541	Economy planetary gear	PLE040-010-SSSA3AA- E8/25/30/46/B5/M4	1	Pcs	W	X
450	732767	Clamping set	Type: DKWN 10/20	1	Pcs	S	X
460	627131	Pane	Type: DIN 125 A / ISO 7089-4-galvanised steel	0	Pcs		X
470	626061	Cheese head screw	Type: DIN 912 / ISO 4762 - M4 x 16 - 8.8 galv.	3	Pcs		X
480	626710	Cheese head screw	Type: DIN 912 / ISO 4762 - M4 x 8 - 8.8 galv.	4	Pcs		X
490	1452610	Adapter plate		1	Pcs		X
500	1452611	Pane		1	Pcs		X
510	1127525	Clamping disc	Type: rotaryARM A-D	1	Pcs		X
520	1127524	Clamping element - washer	Type: rotaryARM A-D	1	Pcs		X
530	626483	Cheese head screw	Type: DIN 912 / ISO 4762 - M4 x 10 - 8.8 galv.	0	Pcs		X

Pos.	Part no.	Designation 1	Designation 2	Quantity	Unit	Spare part (S) / wear part (W)	de- pend- ing on order
540	626707	Cheese head screw	Type: DIN 912 / ISO 4762 - M3 x 12 - 8.8 galv.	4	Pcs		X
550	626207	Cheese head screw	Type: DIN 912 / ISO 4762 - M3 x 6 - 8.8 galv.	3	Pcs		X
560	1452604	Carrier		1	Pcs		X
570	1453070	Connection box		1	Pcs		
580	1024124	RSF retaining plate		1	Pcs		X
580	1040954	Cover sheet metal		1	Pcs		X
590	1452605	Tube		1	Pcs		X
600	1605224	Miniature slip ring	Type: SVTS-A01-S- A-00/06-0250/0250- ST-000	2	Pcs	S	X
610	1605510	Deep groove ball bearing - 10 mm x 19 mm x 5 mm	Type: DIN 625-61800-2RSR	1	Pcs	W	X
620	1003346	Clamping set	Type: BAR 6.0/16	1	Pcs	S	X
630	1703683	Flange with screw-on fixing	Type: PTFIX 1.5-F	2	Pcs		X
640	1703651	Distributor block	Type: PTFIX 2X1.5 GY	6	Pcs		X
650	1703940	Front panel device connector	M12 8-pole A-coded pins, type: SACC-E- M12MS-8CON-M16	1	Pcs		X
660	626485	Cheese head screw	Type: DIN 912 / ISO 4762 - M4 x 30 - 8.8 galv.	4	Pcs		
670	626164	Oval-head screw	Type: ISO 7380 - M3 x 6 - 10.9 galv.	6	Pcs		X
680	1037293	Cheese head screw	Type: DIN 912 / ISO 4762 - M2.5 x 6 - 8.8 galv.	2	Pcs		X
690	1104123	Cheese head screw	Type: DIN 912 / ISO 4762 - M2.5 x 4 - 8.8 galv.	6	Pcs		X
700	1110289	Universal adapter plate	Type: rotaryARM	1	Pcs		X
710	626059	Cheese head screw	Type: DIN 912 / ISO 4762 - M5 x 16 - 8.8 galv.	4	Pcs		X
720	626506	Cylinder pin	Type: DIN 6325 / ISO 8734 - 4 x 18 - A	2	Pcs		X
730	1453001	Adapter plate		1	Pcs		X
740	626315	Cylinder pin	Type: DIN 6325 / ISO 8734 - 4 x 10 - A	2	Pcs		X
750	627070	Cheese head screw	Type: DIN 912 / ISO 4762 - M4 x 20 - 8.8 galv.	4	Pcs		X

Pos.	Part no.	Designation 1	Designation 2	Quantity	Unit	Spare part (S) / wear part (W)	de- pend- ing on order
760	626167	Grub screw, hex socket and flat point	Type: DIN 913 / ISO 4026 - M3 x 3 - 45H - galvanized	0	Pcs		X
770	1452606	Retaining plate	M8	2	Pcs		X
780	1702504	Panel-mount socket	Type: M8.FMLE.PN-LFRONT.4POS.STR	0	Pcs		X
790	1702574	Panel-mount socket	Type: M8.FMLE.PN-LFRONT.3POS.STR	0	Pcs		X
800	626484	Cheese head screw	Type: DIN 912 / ISO 4762 - M4 x 25 - 8.8 galv.	1	Pcs		
810	626481	Cheese head screw	Type: DIN 7984 - M4 x 8 - 8.8 galv.	2	Pcs		
820	1605215	Cheese head screw	Type: DIN 912 / ISO 4762 - M3 x 65 - 8.8 galv.	7	Pcs		
830	627620	Cheese head screw	Type: DIN 912 / ISO 4762 - M3 x 55 - 8.8 galv.	3	Pcs		
840	626742	Cheese head screw	Type: DIN 912 / ISO 4762 - M3 x 30 - 8.8 galv.	6	Pcs		
850	626209	Cheese head screw	Type: DIN 912 / ISO 4762 - M3 x 10 - 8.8 galv.	2	Pcs		
860	626705	Cheese head screw	Type: DIN 912 / ISO 4762 - M3 x 8 - 8.8 galv.	3	Pcs		
870	626325	Cylinder pin	Type: DIN 6325 / ISO 8734 - 5 x 12 - A	2	Pcs		
880	626194	Grub screw, hex socket and flat point	Type: DIN 913 / ISO 4026 - M8 x 6 - 45H - galvanized	1	Pcs		
890	626072	Oval-head screw	Type: ISO 7380 - M4 x 8 - 8.8 galv.	0	Pcs		X
900	1461496	Adjusting ring	d8	2	Pcs		
910	1461495	Adjusting ring	d5	1	Pcs		X
920	1606585	Cylinder pin	Type: DIN 6325 / ISO 8734 - 8 x 120 - A	1	Pcs		
930	1051515	Cylinder pin	Type: DIN 6325 / ISO 8734 - 5 x 30 - A	1	Pcs		X
940	1067496	Lock nut	M8 type: SACC-E-MU-M8	2	Pcs		X
950	1325930	I/O Link connector variant	rotaryARM I	0	Pcs		X
960	1424585	Retaining plate		0	Pcs		X

Pos.	Part no.	Designation 1	Designation 2	Quantity	Unit	Spare part (S) / wear part (W)	depending on order
970	1703770	Sensor/actuator circular connector	M12, 5pol. A-coded pins, with solder sleeves, for rear panel mounting type: T4130012051-000	0	Pcs		X

R = radius of swivel arm

2.2 Rotary feedthrough (part no. 1322524)



Pos.	Part no.	Designation 1	Designation 2	Quantity	Unit	Spare part (S) / wear part (W)	depending on order
10	1452585	Rotary feedthrough housing		1	Pcs		
20	1452586	Retaining plate		1	Pcs		
30	1452587	Shaft		1	Pcs		
40	1446329	Toothed lock washer Al 13 AT3/34-0		1	Pcs	W	
50	732767	Clamping set	Type: DKWN 10/20	1	Pcs	S	
60	1147070	Deep groove ball bearing – 12 mm x 24 mm x 6 mm	Type: DIN 625-61901-2RS	1	Pcs	W	
70	1079659	Deep groove ball bearing – 30 mm x 47 mm x 9 mm	Type: DIN 625-61906-2RS	1	Pcs	W	
80	1605213	X-ring – NBR – 70° Shore A	Type: 20.35-1.78	3	Pcs	W	
90	1021045	O-ring – NBR – 70° Shore A	Type: 4-1.00	2	Pcs	W	
100	627630	Oval-head screw	Type: ISO 7380 - M3 x 8 - 10.9 galv.	4	Pcs		

3 Drawings

The parts lists and drawings in this document are a general representation. Specific parts (engine, gear unit, ...) depend on the order and may vary.

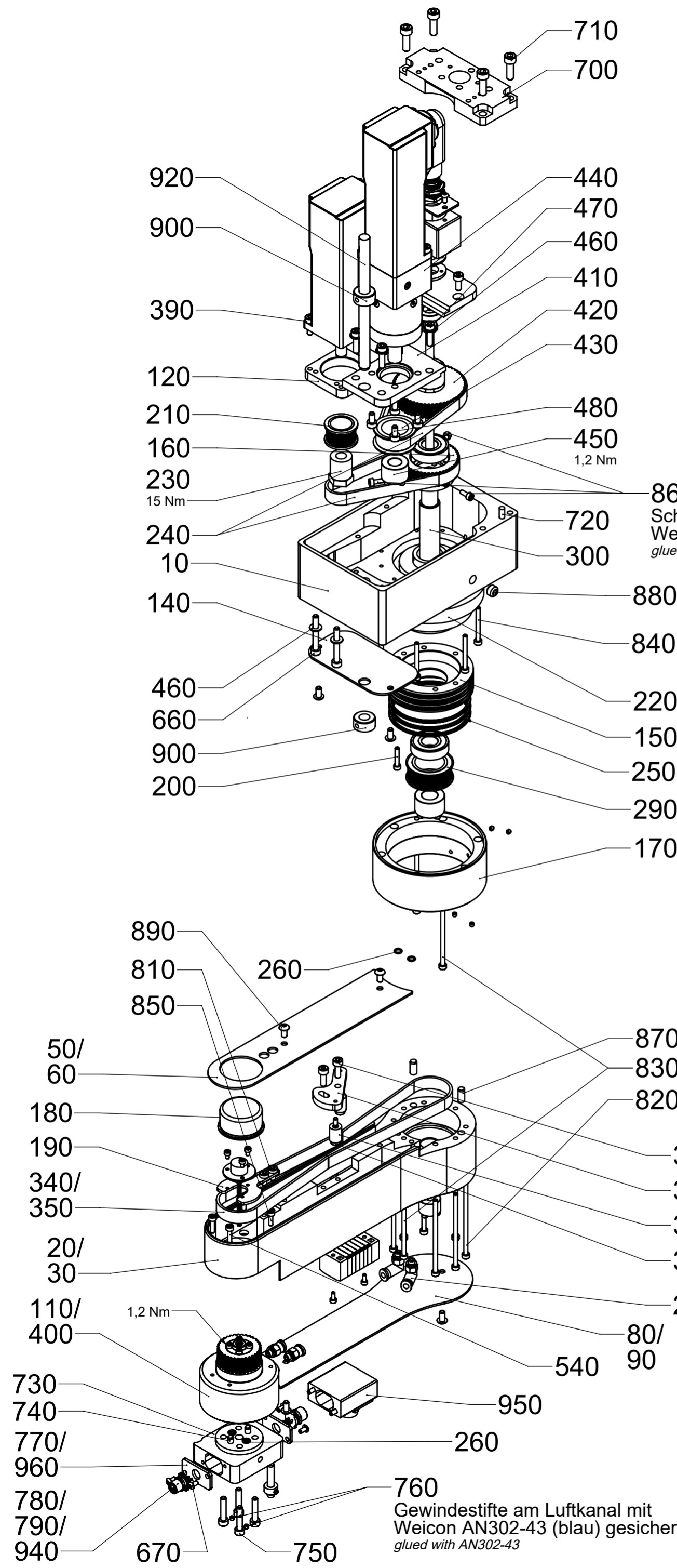
Only order spare parts using the specific spare parts list supplied with the product.

See also

-  [1800216_Schwenkarmmodule Swivel arm module.pdf](#) [▶ 11]
-  [1322524_Drehdurchführung Rotary feed-through.pdf](#) [▶ 18]

NC-Schwenkachse,
NC-Drehachse
NC swivel axis,
NC rotary axis

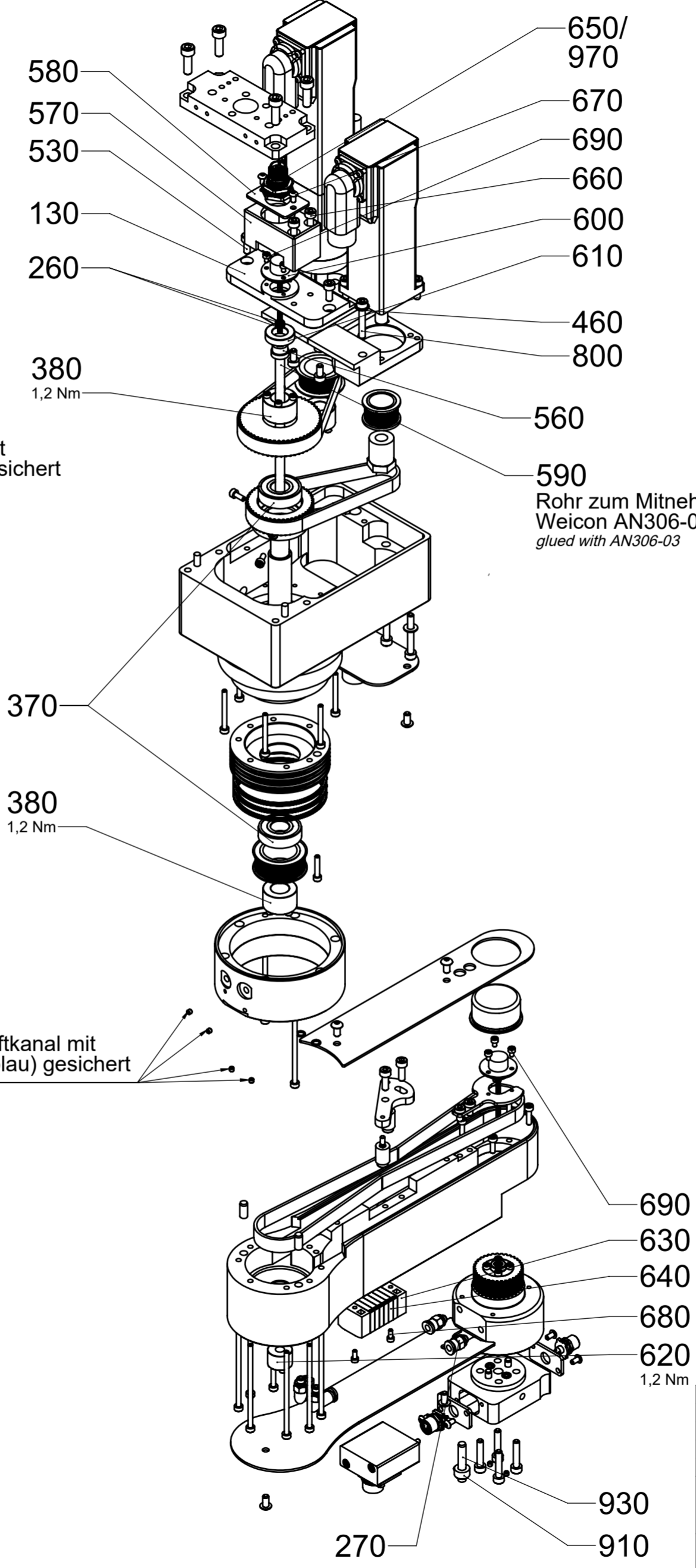
ohne Abdeckung
without cover



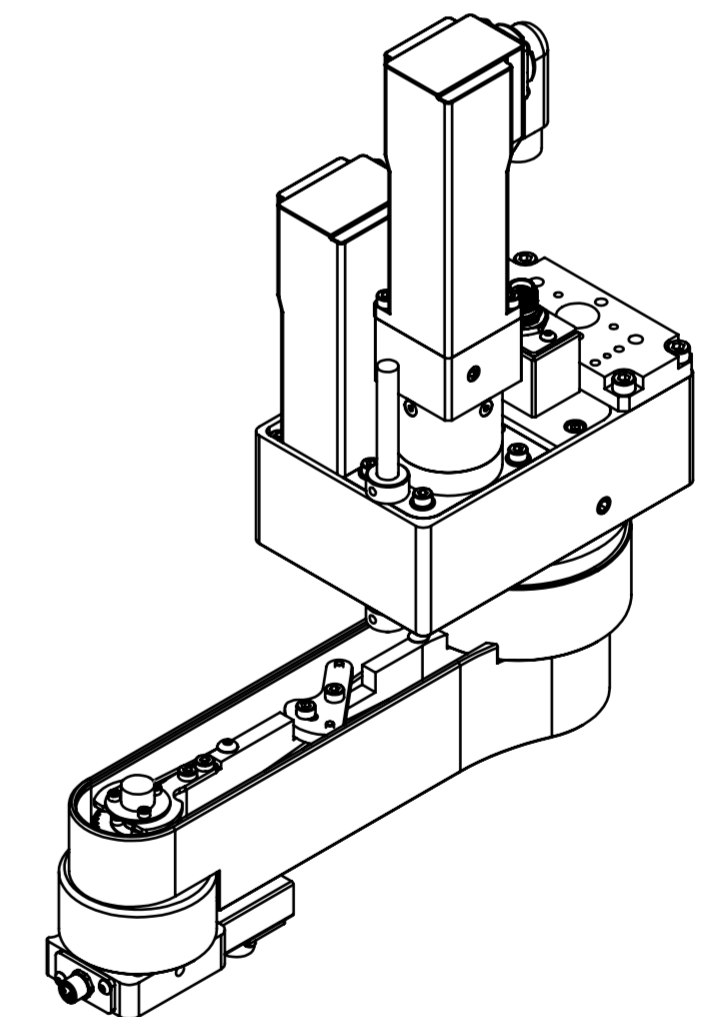
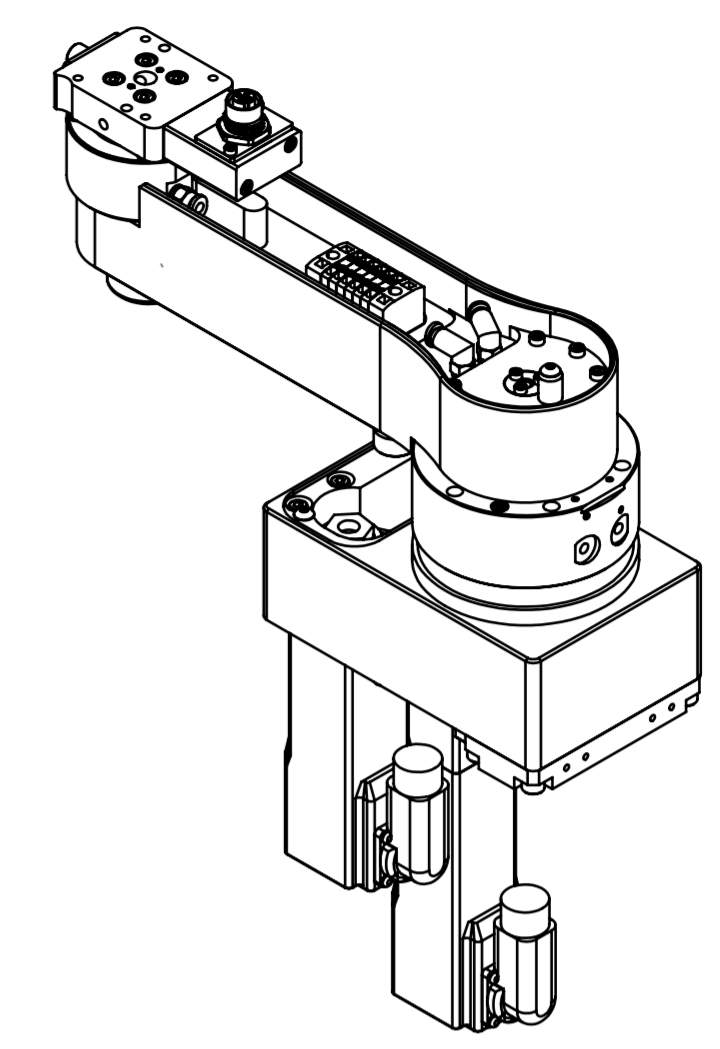
860
Schrauben zum Getriebe mit
Weicon AN302-43 (blau) gesichert
glued with AN302-43

760
Gewindestifte am Luftkanal mit
Weicon AN302-43 (blau) gesichert
glued with AN302-43

760
Gewindestifte am Luftkanal mit
Weicon AN302-43 (blau) gesichert
glued with AN302-43

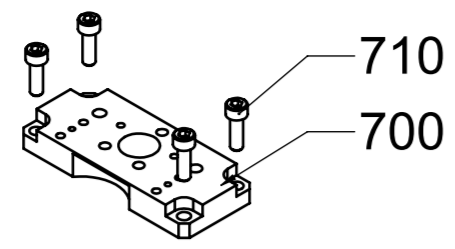


590
Rohr zum Mitnehmer mit
Weicon AN306-03 (grün) verklebt
glued with AN306-03



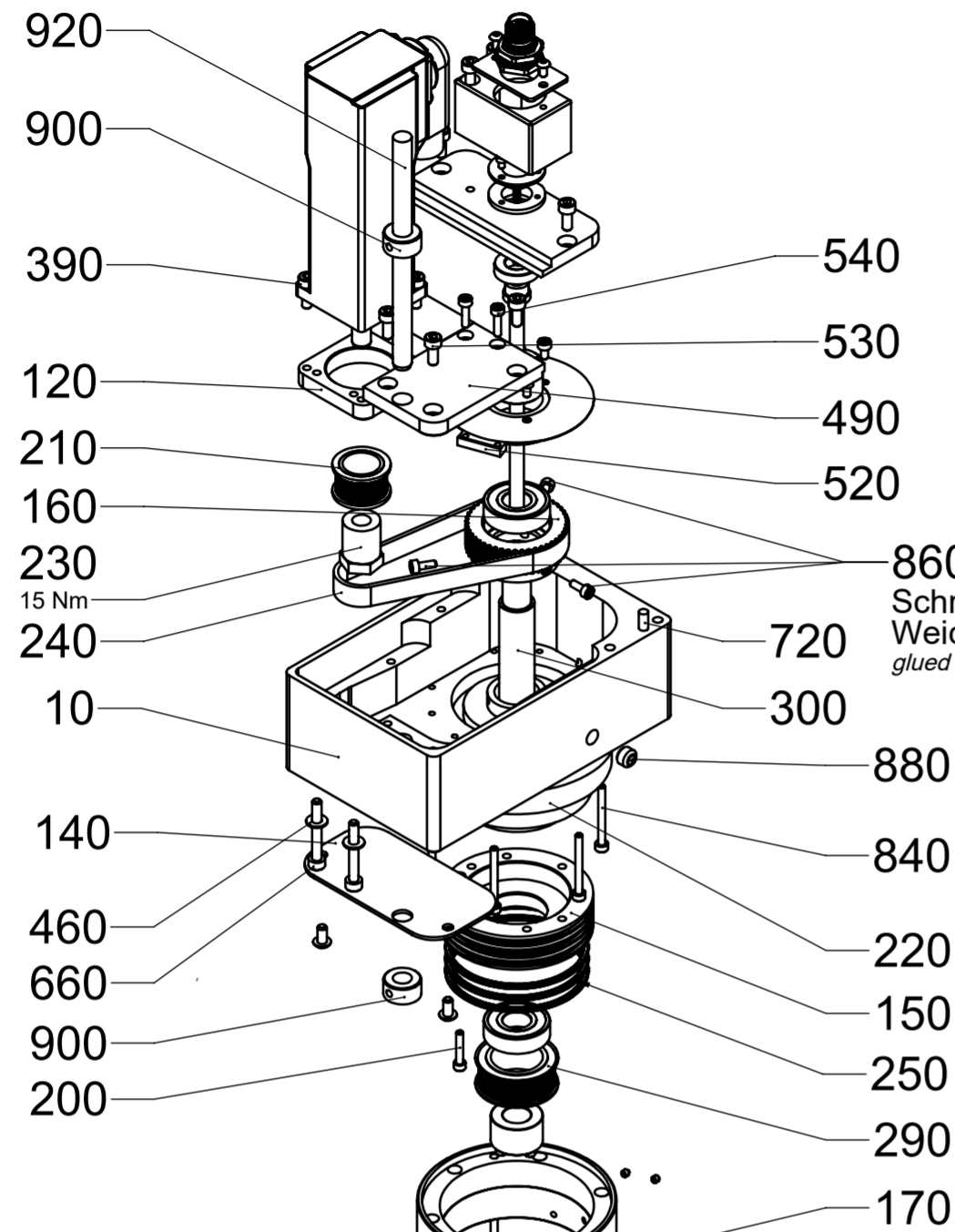
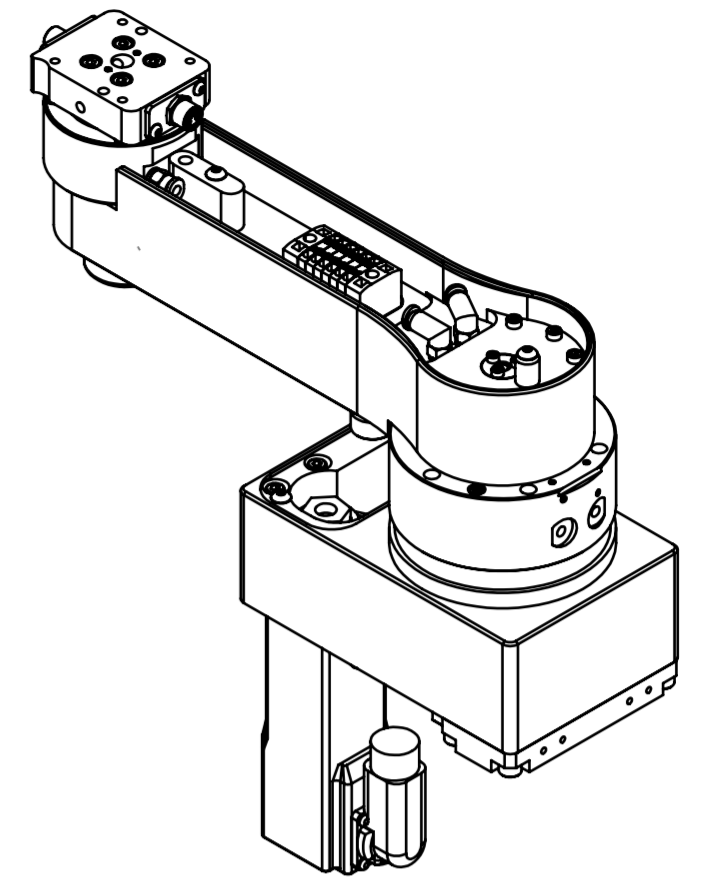
Alle Rechte vorbehalten / all rights reserved - ISO 16016

INDEX / Vorg Nr / ope Nr, ÄNDERUNG / change:		DATUM/date	NAME			
Allgemeintoleranzen / general tolerances DIN ISO 2768-1: m (mittel/middle) DIN ISO 2768-2: Toleranzklasse/tolerance class H		BEARB / editor: GEPR / check:	27.08.2024		Fritzsche	
Bezeichnung / designation:				ARTIKEL-NR / Item-No:	INDEX	FORMAT
Schwenkarmmodul Swivel arm module				1800216	-	2
				MAßSTAB / scale: 1:2		BLATT / sheet 1 / 7
Bezeichnung 2: Typ: rotaryARM 4079#				Ursprung:		

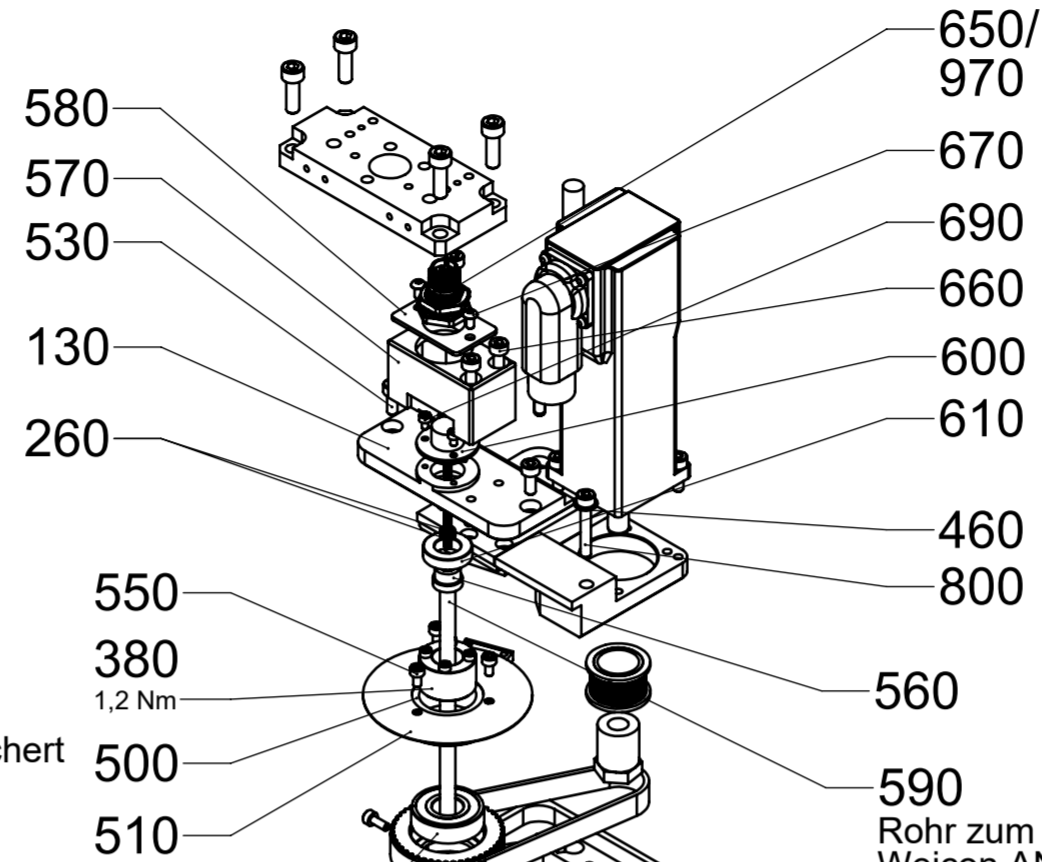


NC-Schwenkachse,
passive Drehachse
NC swivel axis,
passive rotary axis

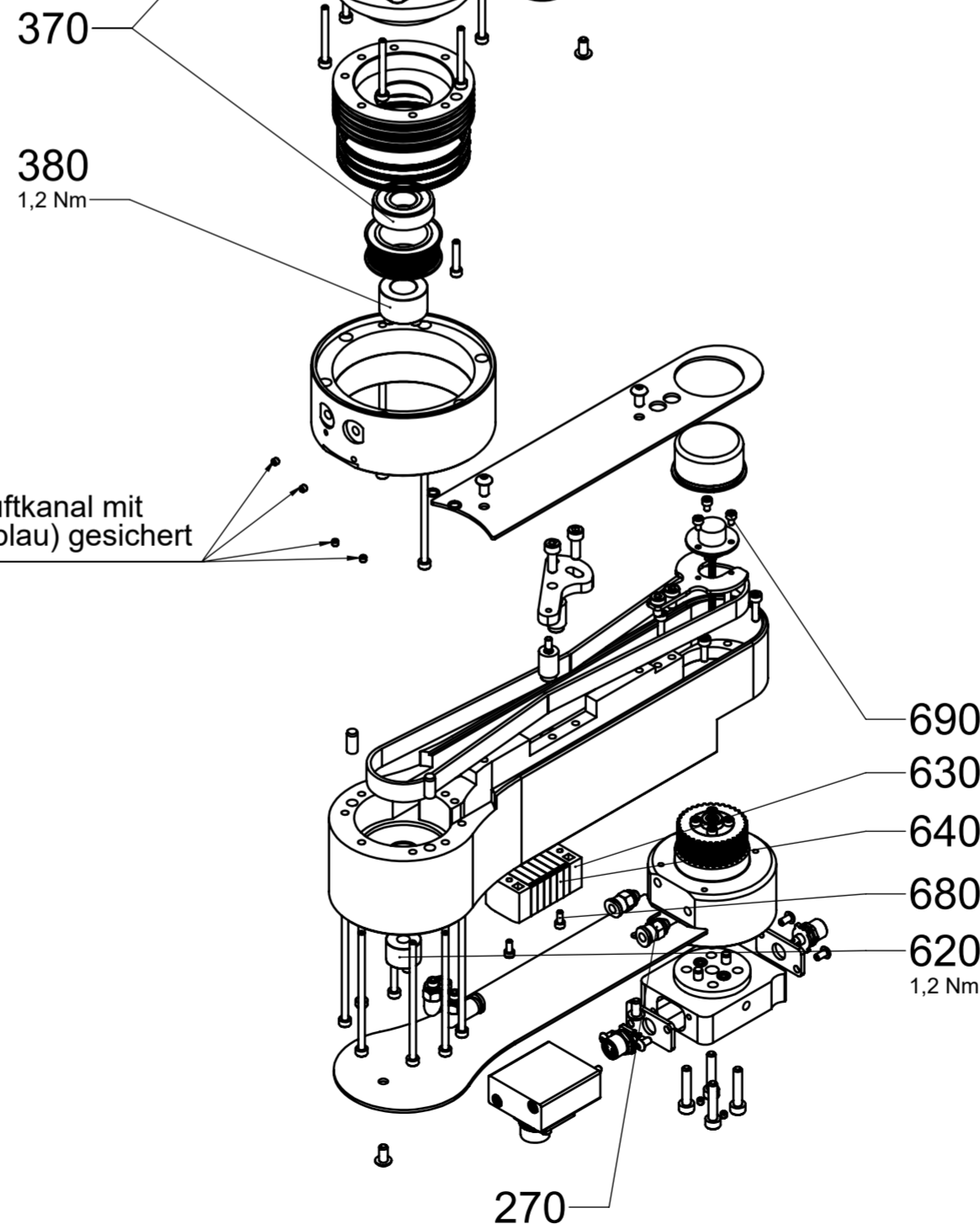
ohne Abdeckung
without cover



860
Schrauben zum Getriebe mit
Weicon AN302-43 (blau) gesichert
glued with AN302-43

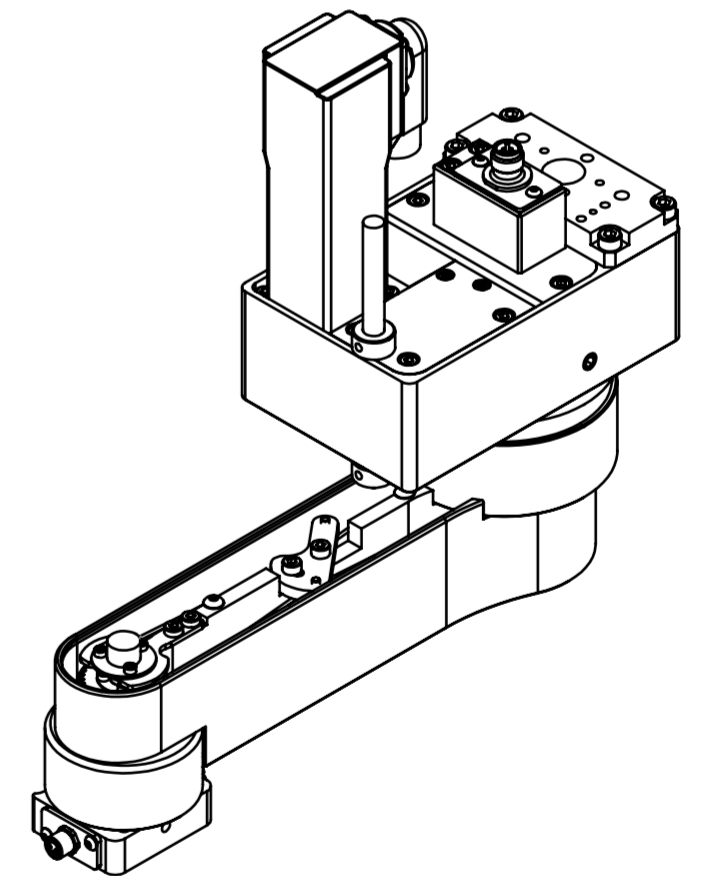


590
Rohr zum Mitnehmer mit
Weicon AN306-03 (grün) verklebt
glued with AN306-03




760
Gewindestifte am Luftkanal mit
Weicon AN302-43 (blau) gesichert
glued with AN302-43

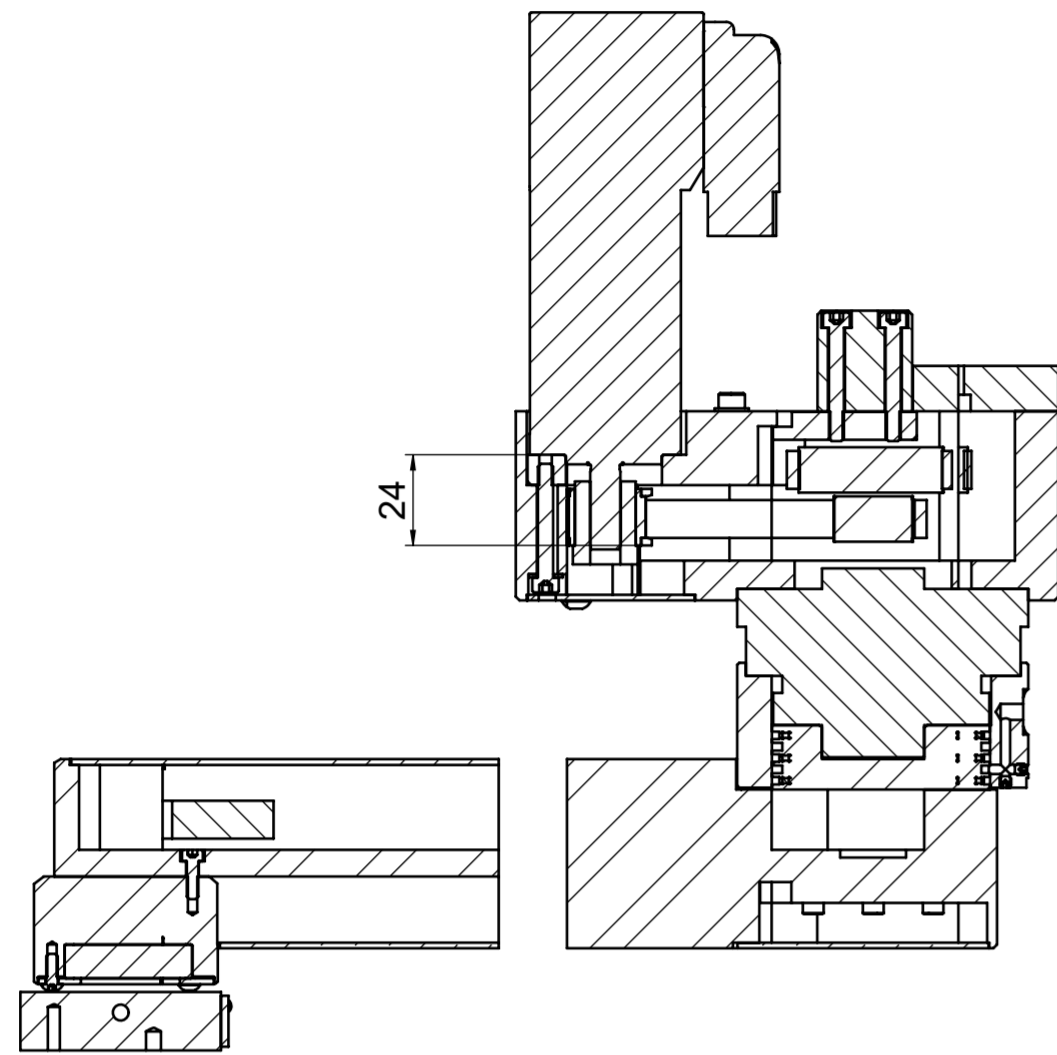
760
Gewindestifte am Luftkanal mit
Weicon AN302-43 (blau) gesichert
glued with AN302-43



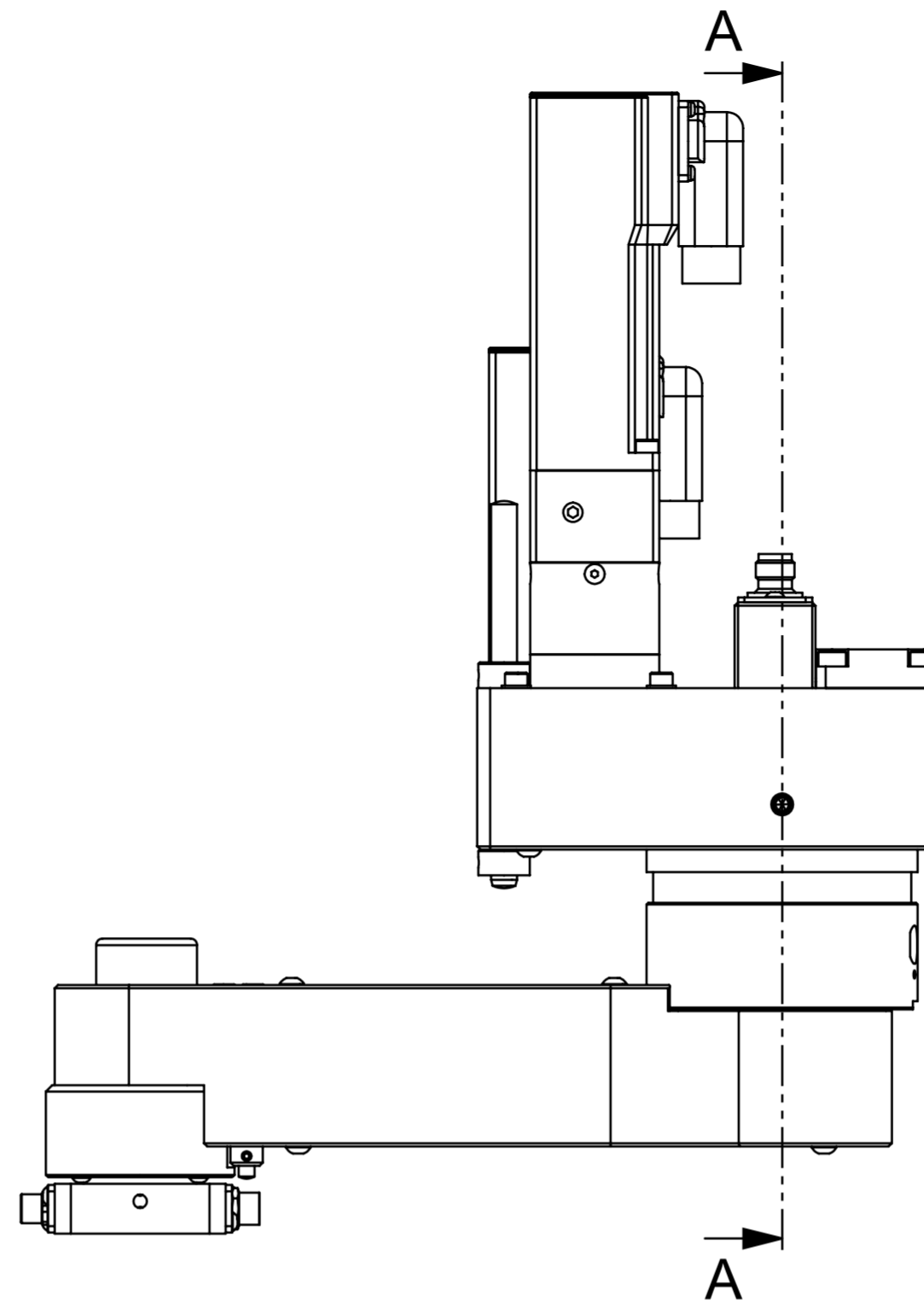
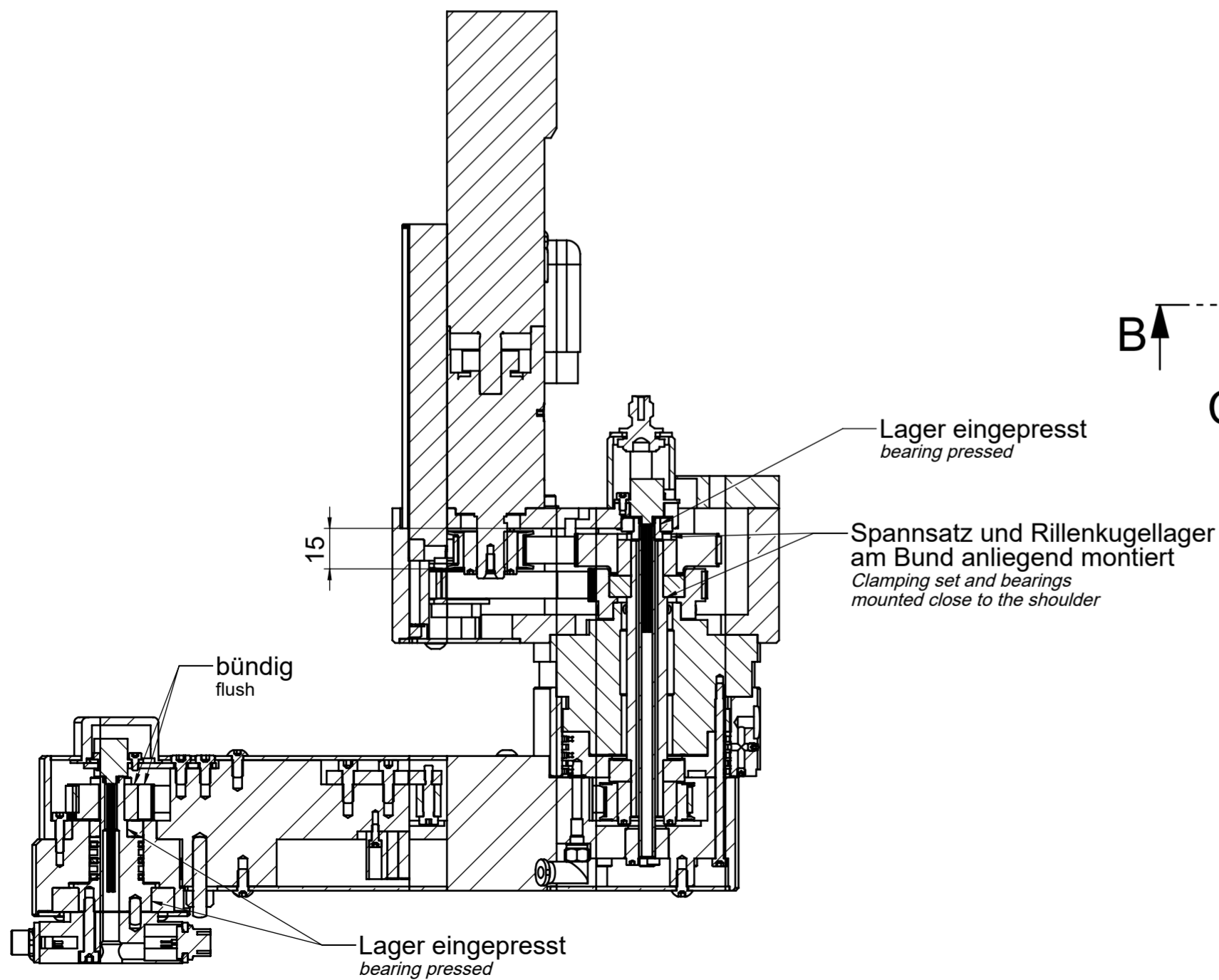
Alle Rechte vorbehalten / all rights reserved - ISO 16016

INDEX / Vorg Nr / ope Nr, ÄNDERUNG / change:		DATUM/date	NAME	
Allgemeintoleranzen / general tolerances DIN ISO 2768-1: m (mittel/middle) DIN ISO 2768-2: Toleranzklasse/tolerance class H		27.08.2024	Fritzsche	
Bezeichnung / designation:		ARTIKEL-NR / Item-No:		INDEX
Schwenkarmmodul Swivel arm module		1800216		2
Bezeichnung 2: Typ: rotaryARM 4079#		MAßSTAB / scale:		BLATT / sheet
		1:2		2 / 7
		Ursprung:		

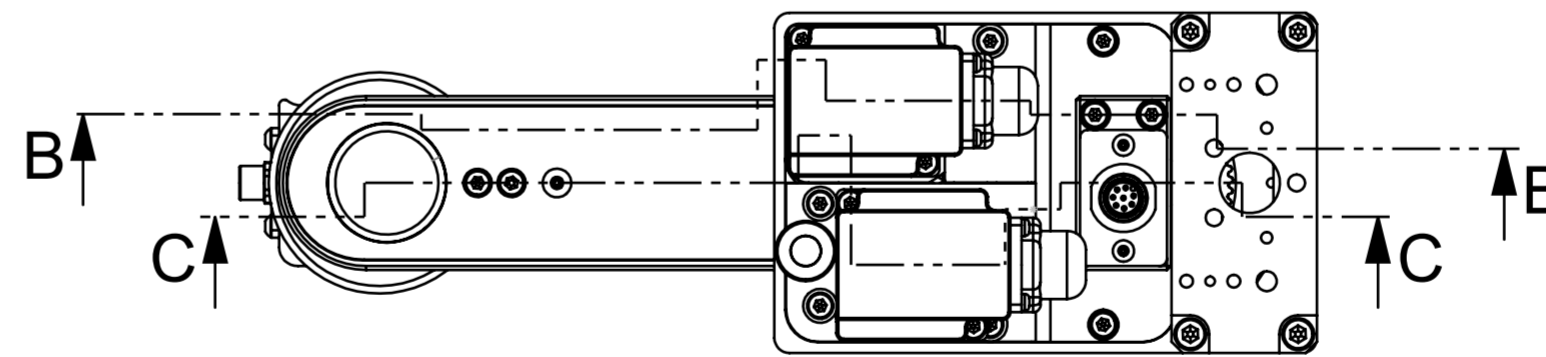
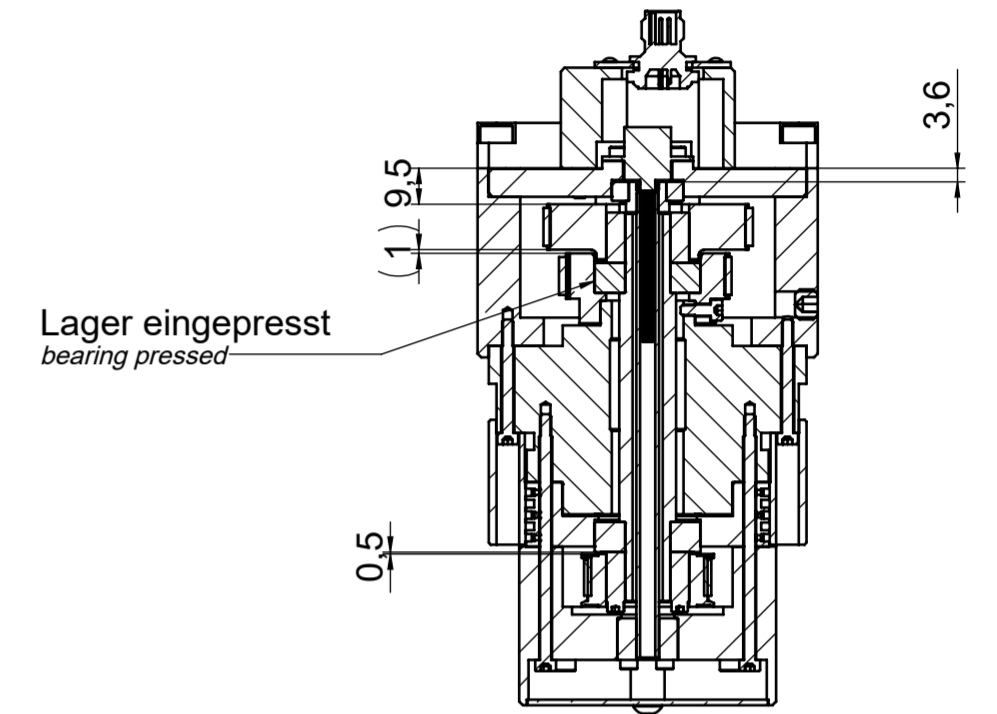
B-B



C-C

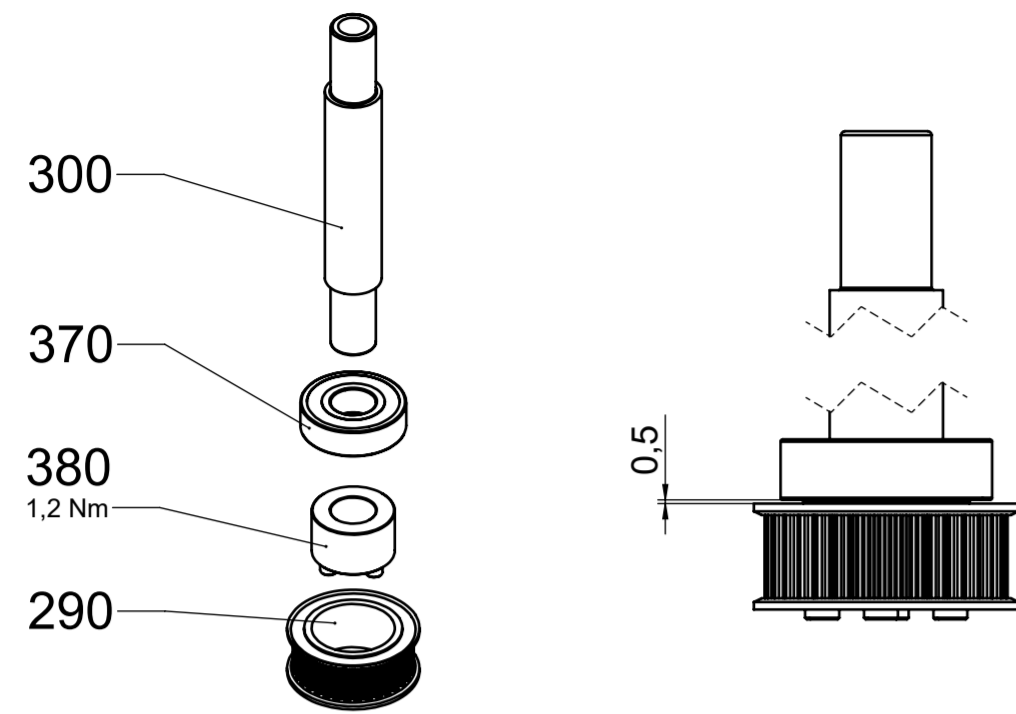


A-A

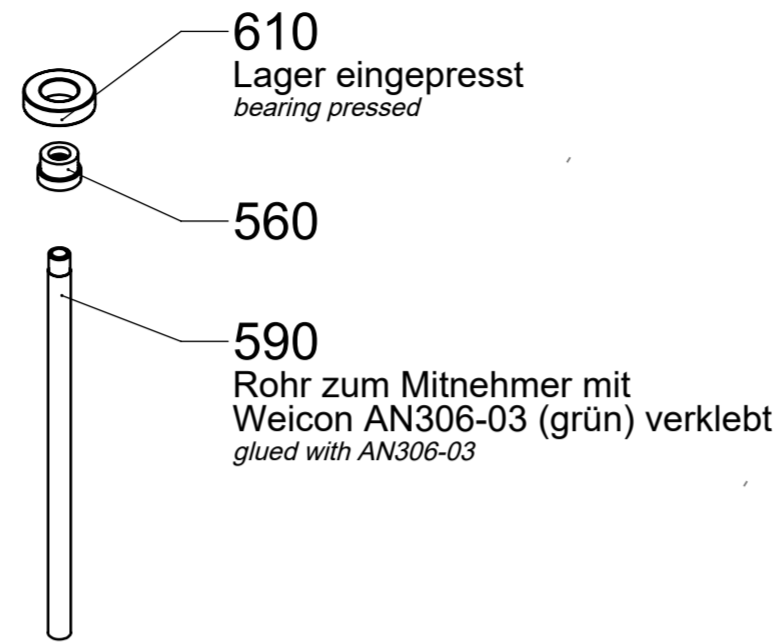


INDEX / Vorg Nr / ope Nr; ÄNDERUNG / change:		DATUM/date	NAME		
Allgemeintoleranzen / general tolerances DIN ISO 2768-1: m (mittel/middle) DIN ISO 2768-2: Toleranzklasse/tolerance class H		BEARB / editor: GEPR / check:	Fritzsche		
Bezeichnung / designation:			ARTIKEL-NR / Item-No:	INDEX	FORMAT
Schwenkarmmodul Swivel arm module			1800216	-	2
			MAßSTAB / scale: 1:2	BLATT / sheet 3 / 7	
Bezeichnung 2: Typ: rotaryARM 4079#			Ursprung:		

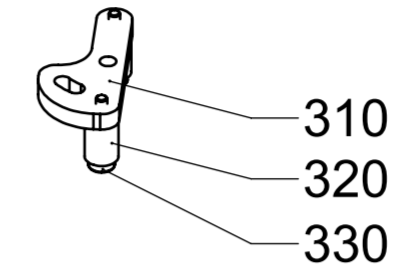
A



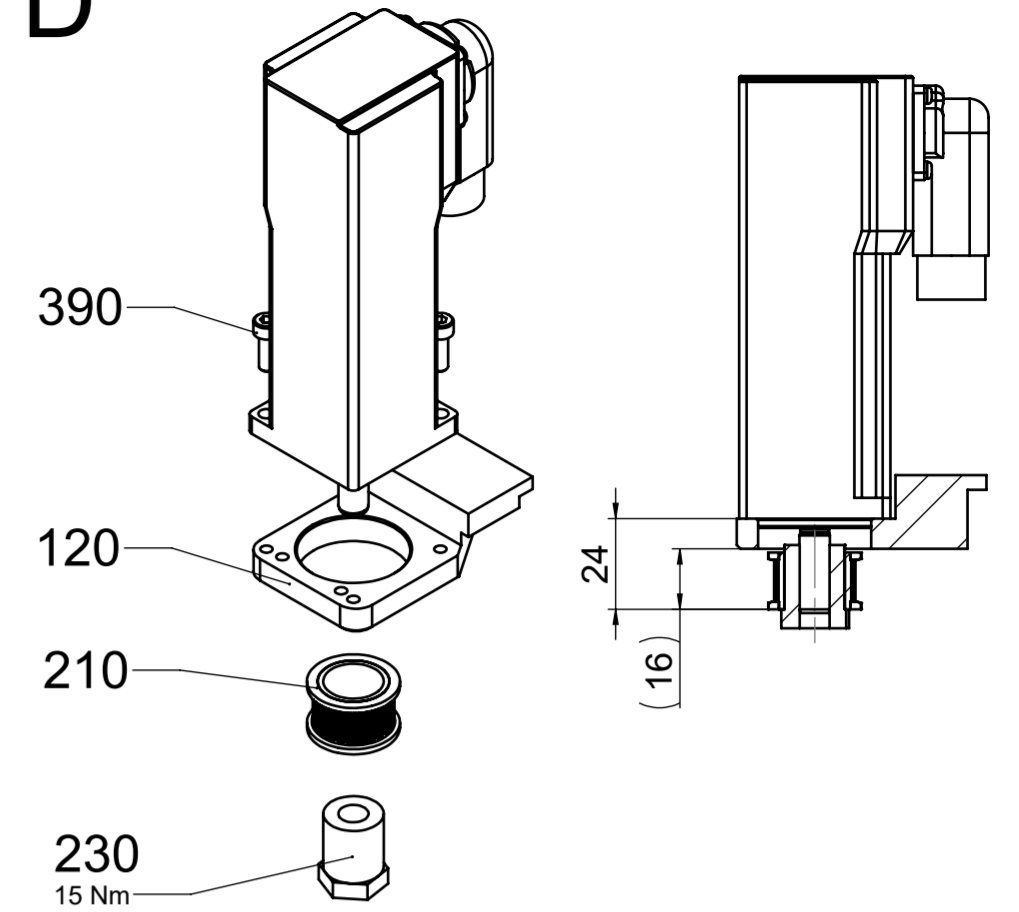
B



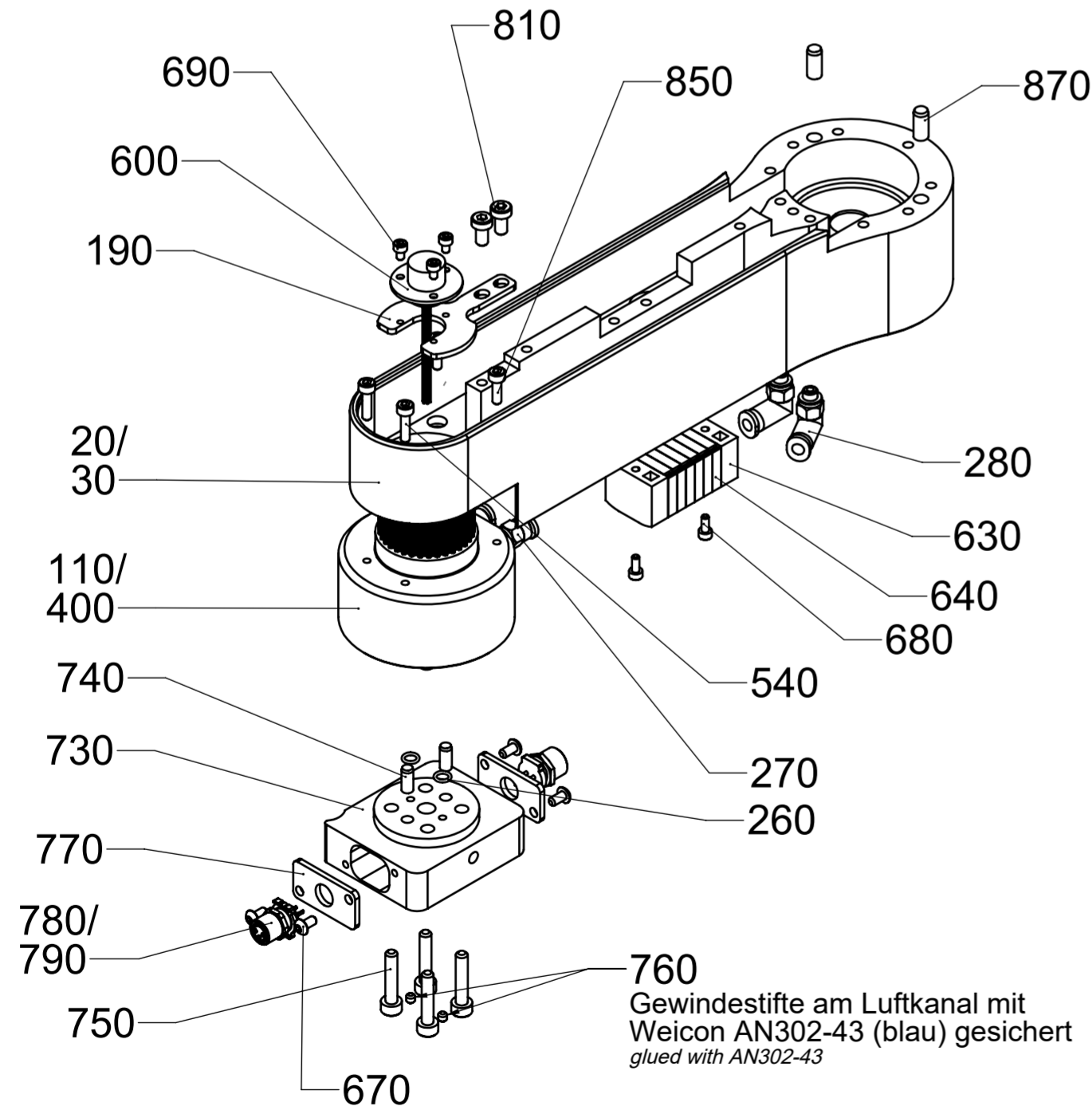
C



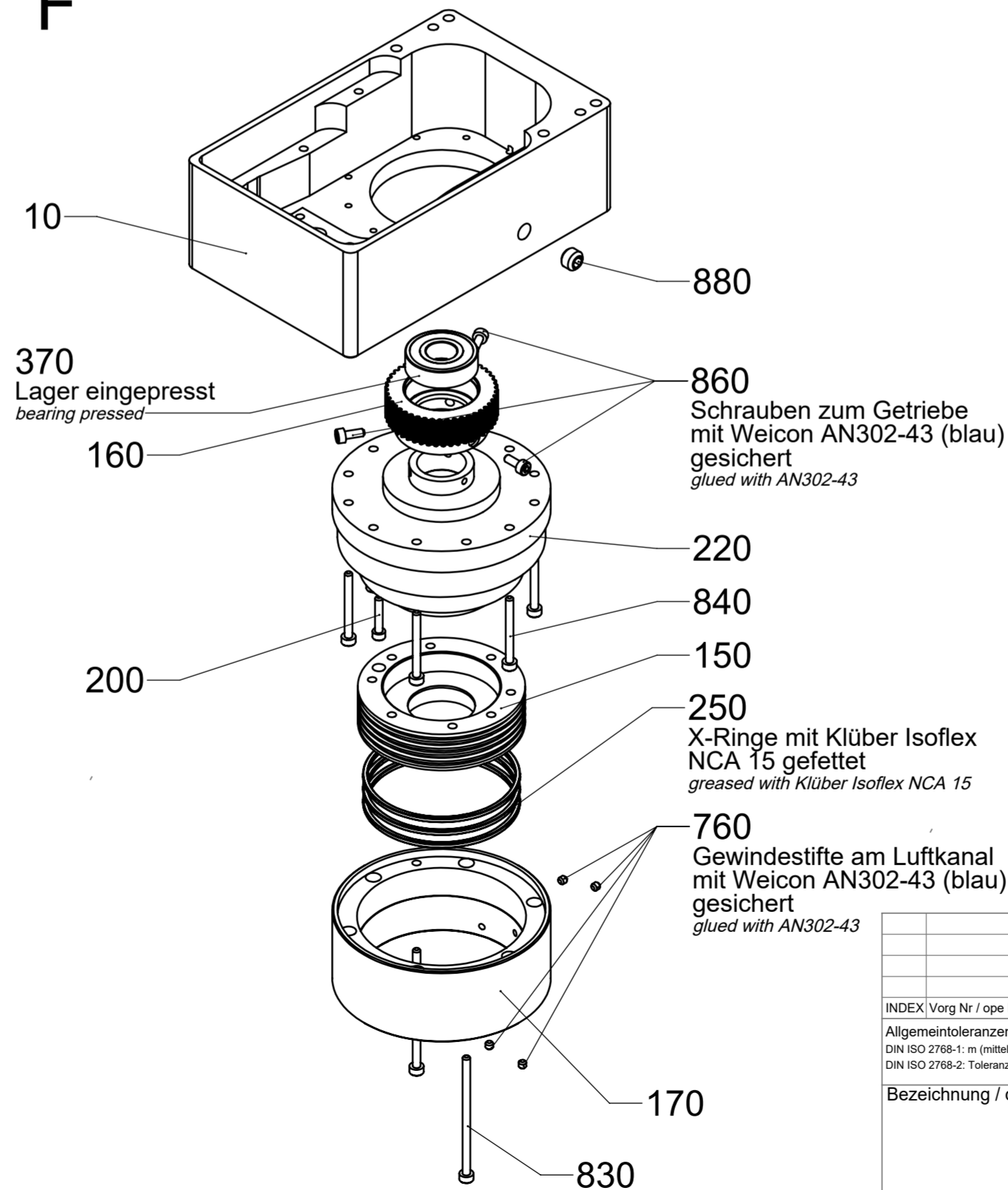
D



E

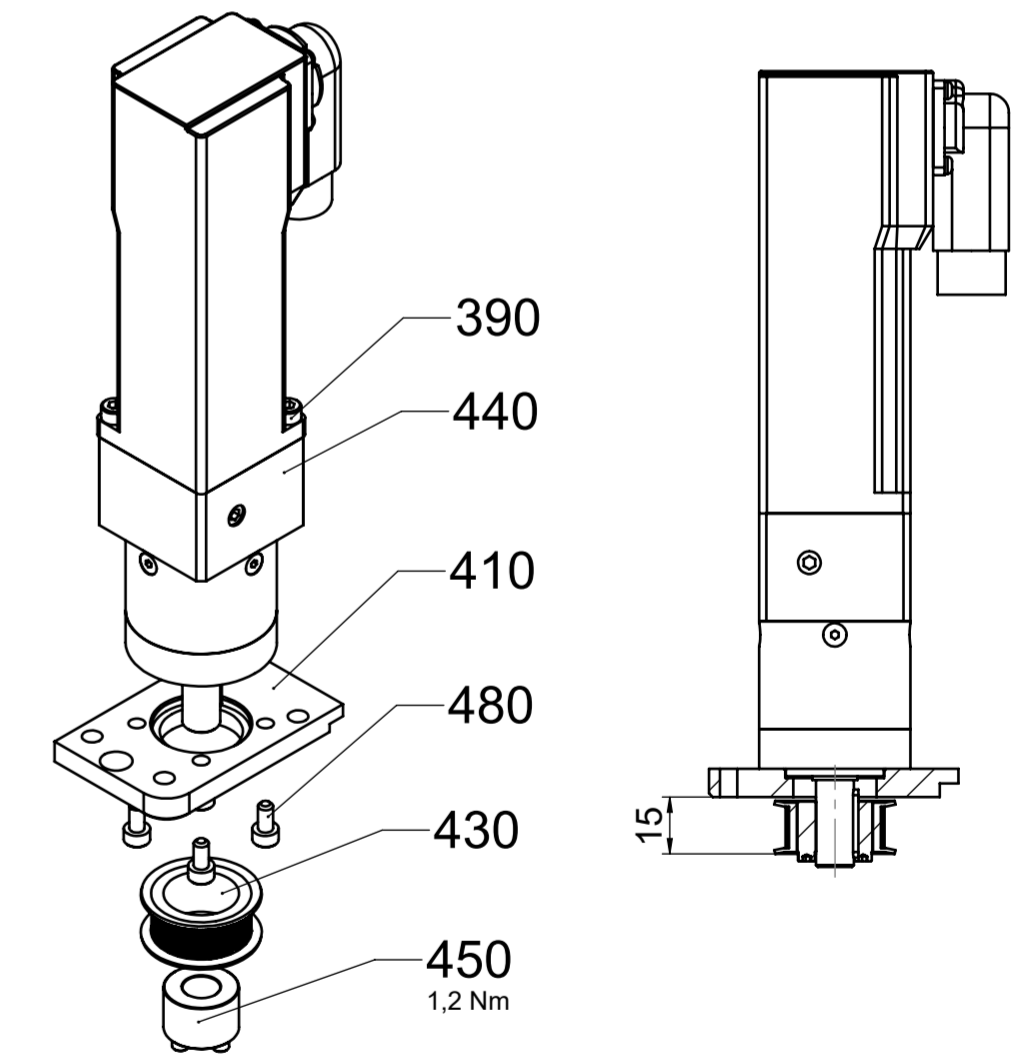



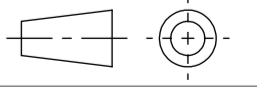
F

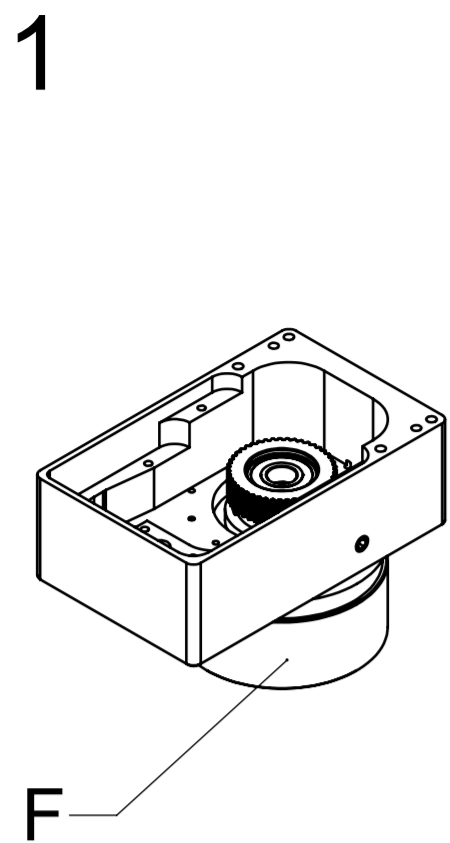


G

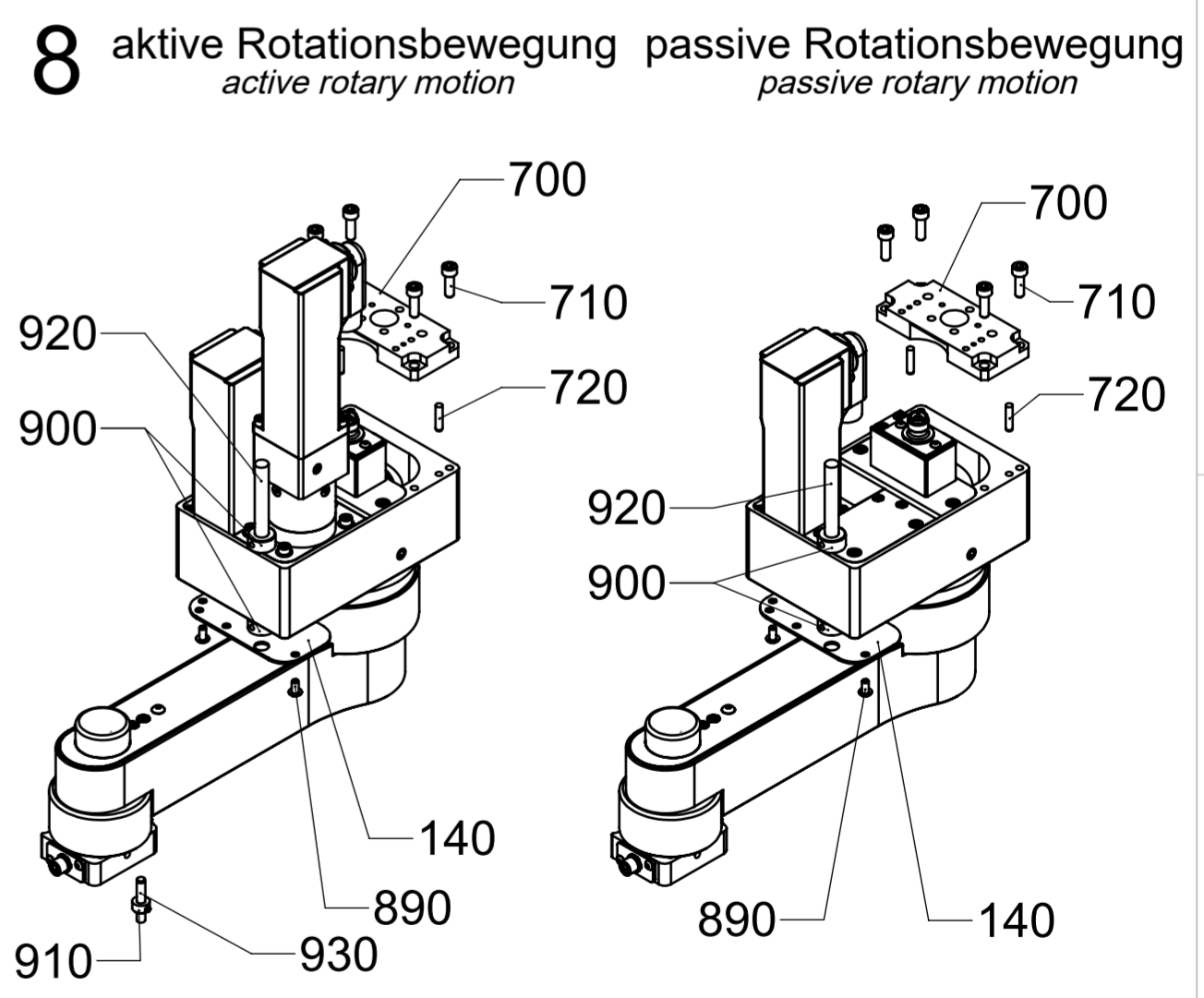
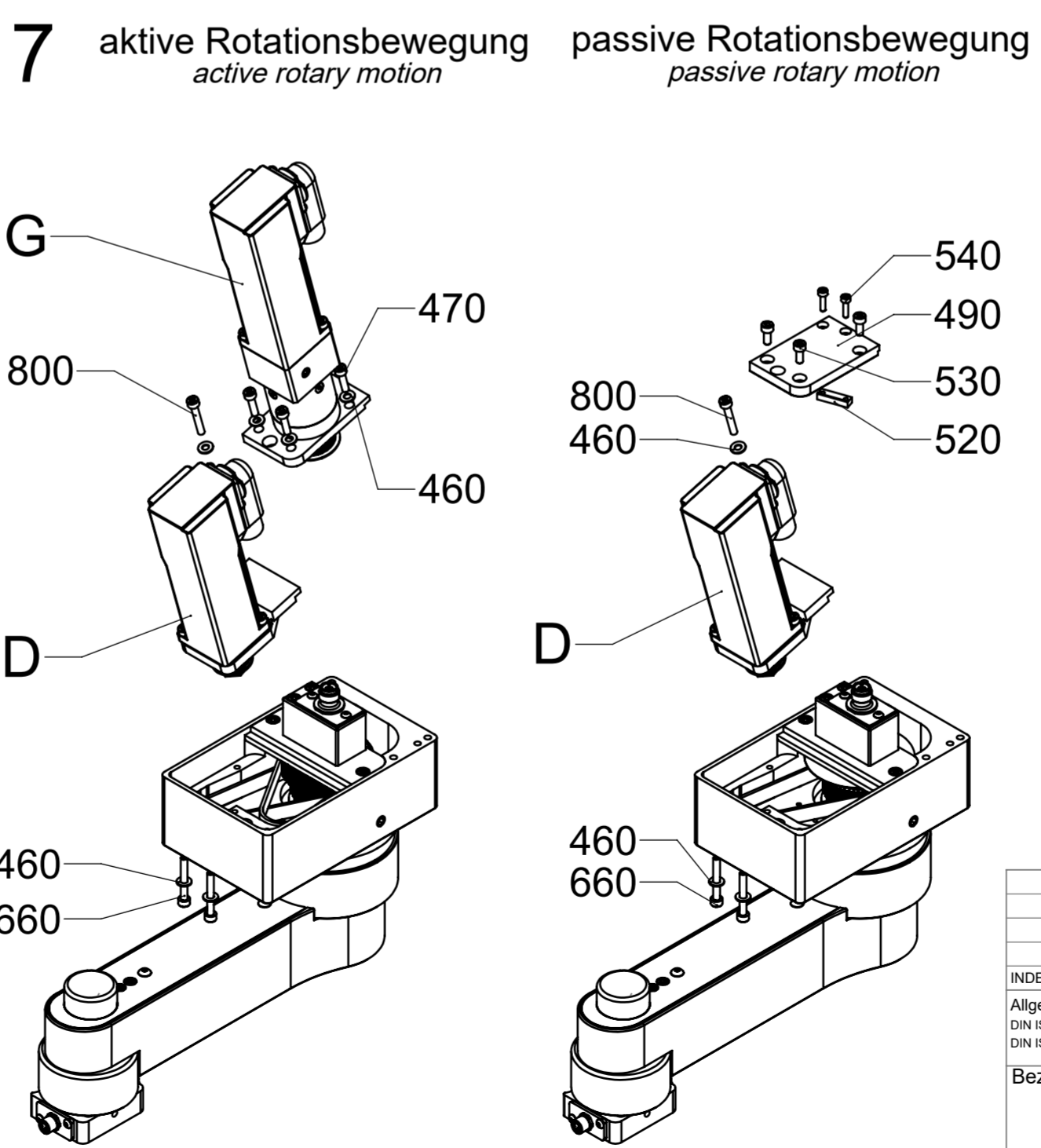
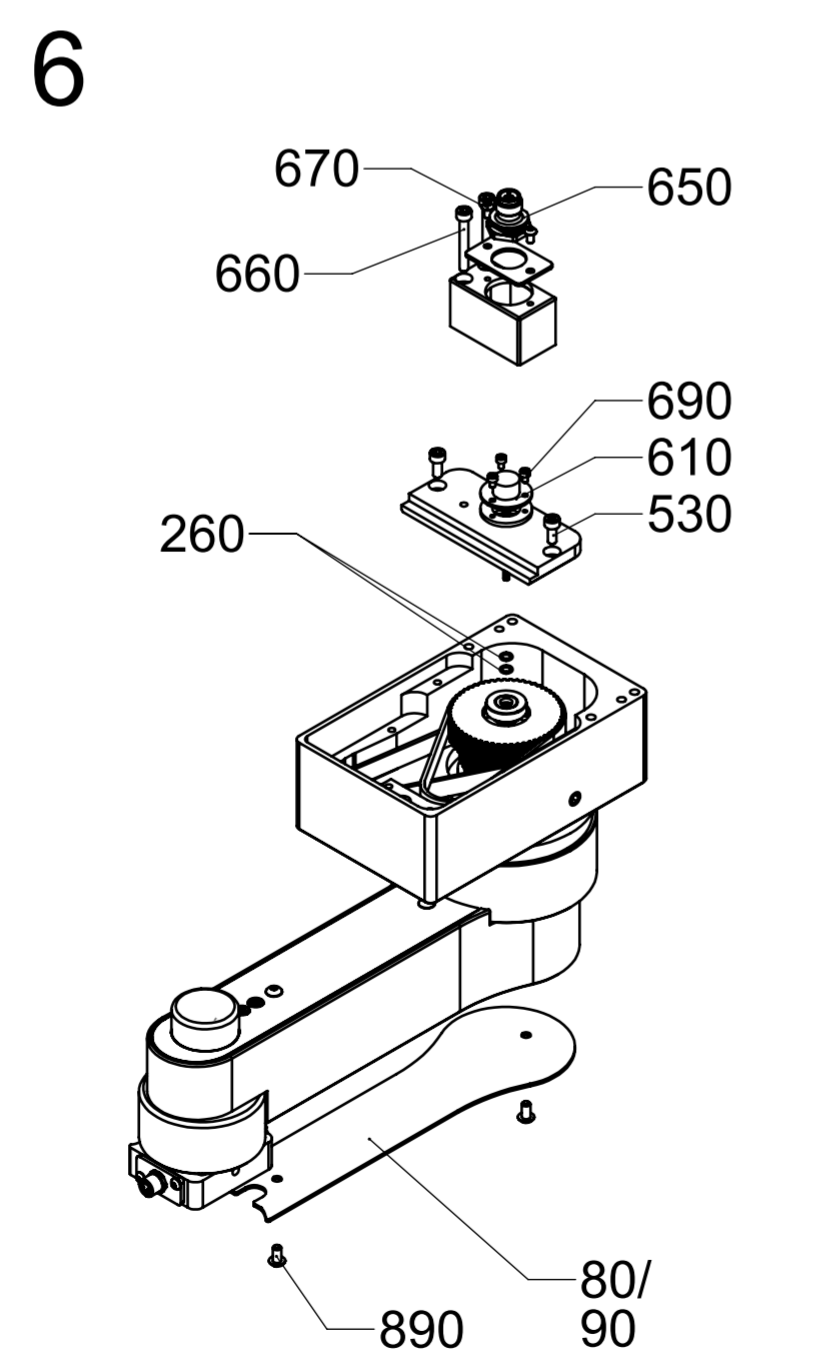
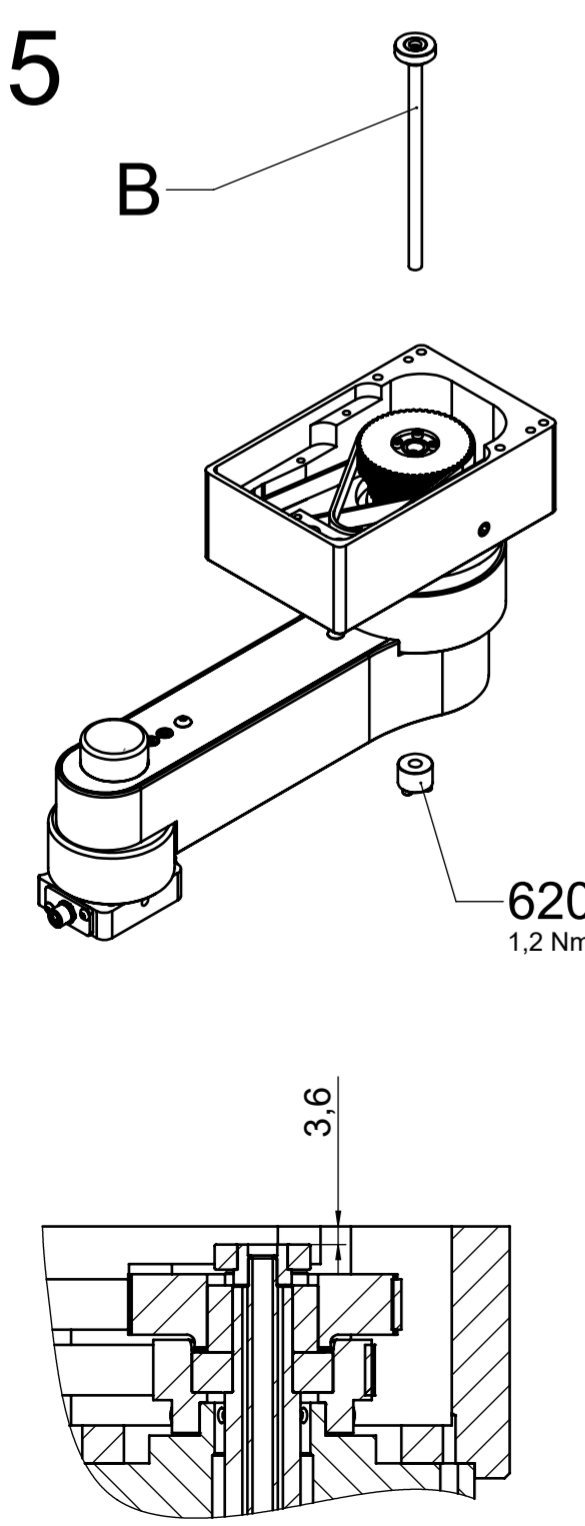
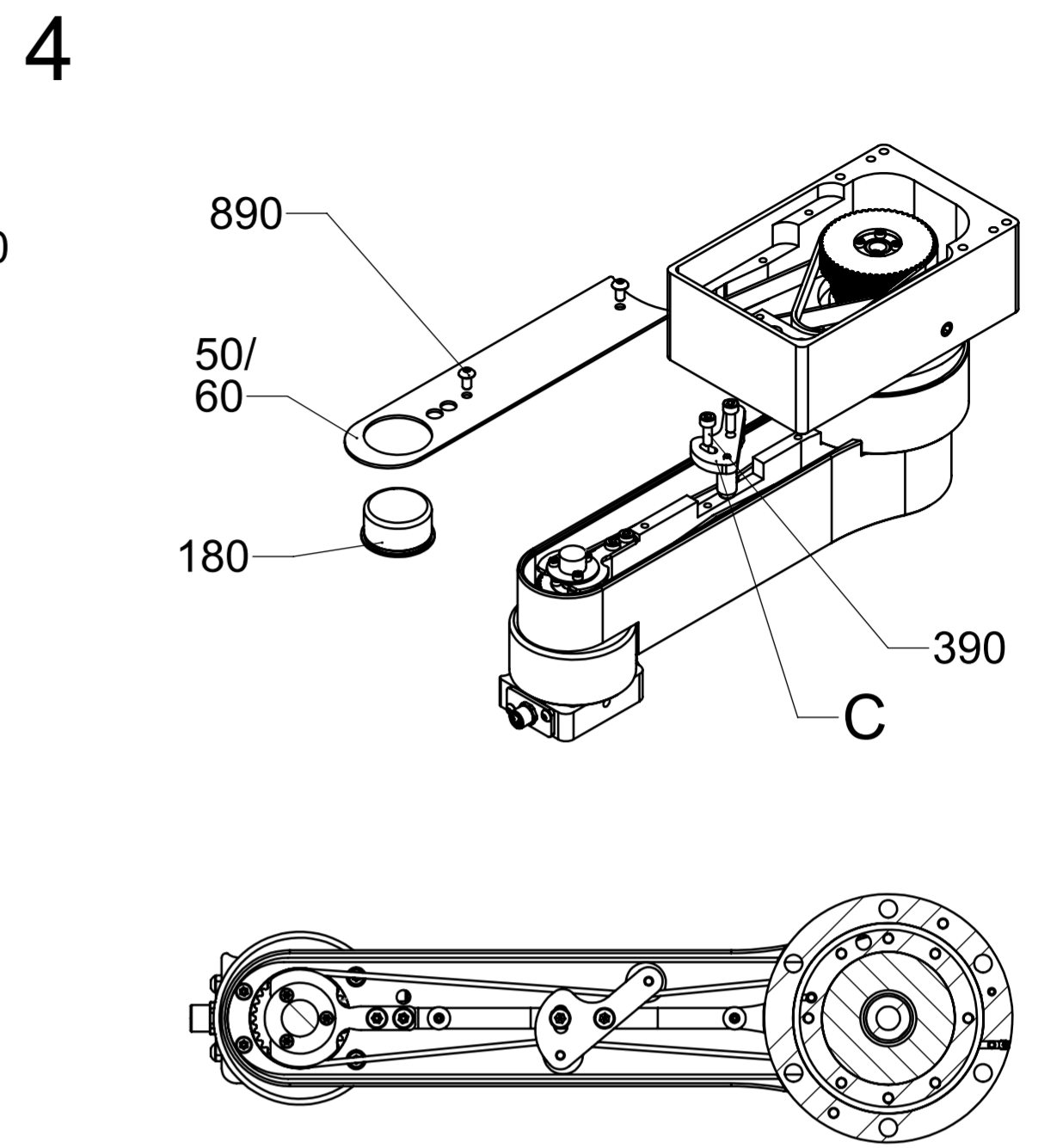
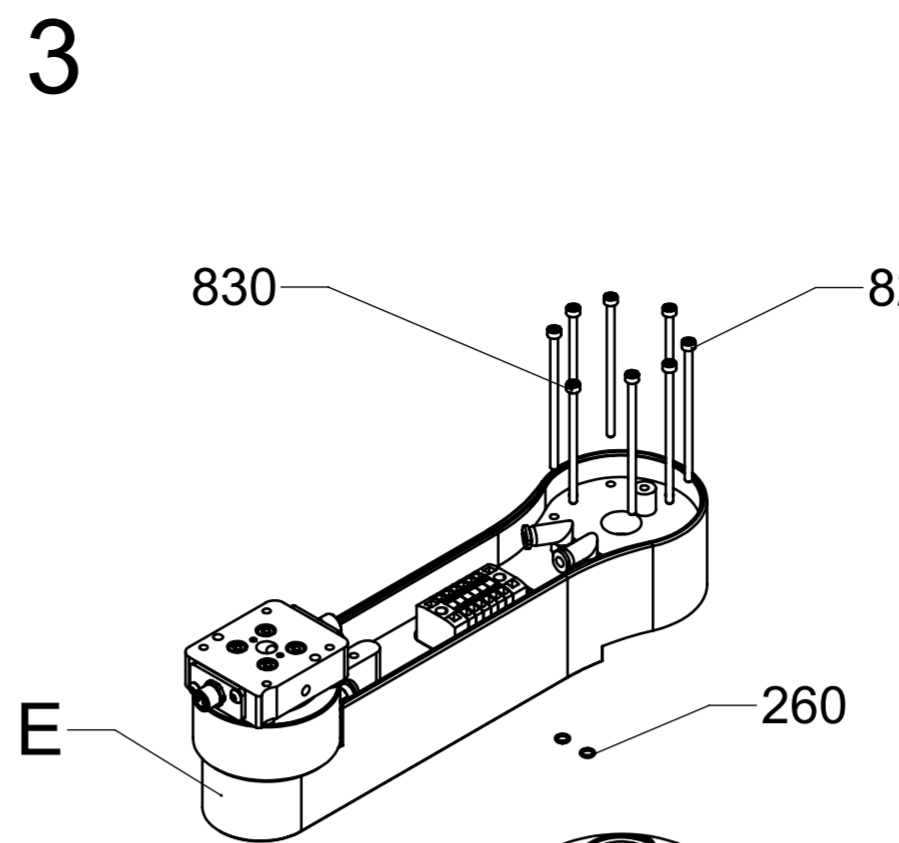
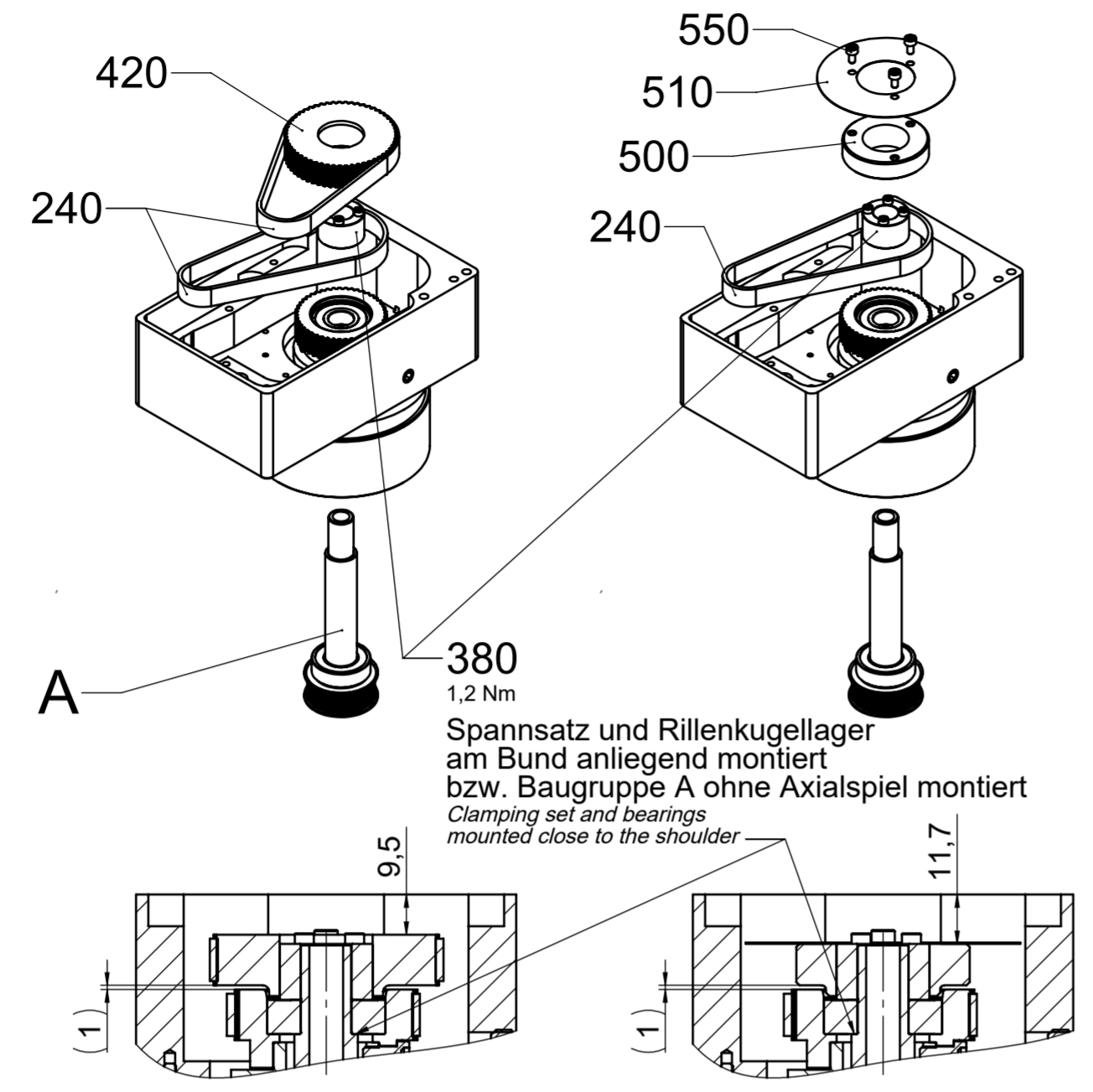
aktive Rotationsbewegung
active rotary motion



INDEX / Vorg Nr / ope Nr: ÄNDERUNG / change:		DATUM/date	NAME		
Allgemeintoleranzen / general tolerances DIN ISO 2768-1: m (mittel/middle) DIN ISO 2768-2: Toleranzklasse/tolerance class H		27.08.2024	Fritzsche		
WERKSTOFF / material:		BEARB / editor:			
		GEPR / check:			
Bezeichnung / designation:			ARTIKEL-NR / Item-No:	INDEX	FORMAT
Schwenkarmmodul Swivel arm module			1800216	-	2
			MAßSTAB / scale:	BLATT / sheet	
			1:2	4 / 7	
Bezeichnung 2: Typ: rotaryARM 4079#			Ursprung:		



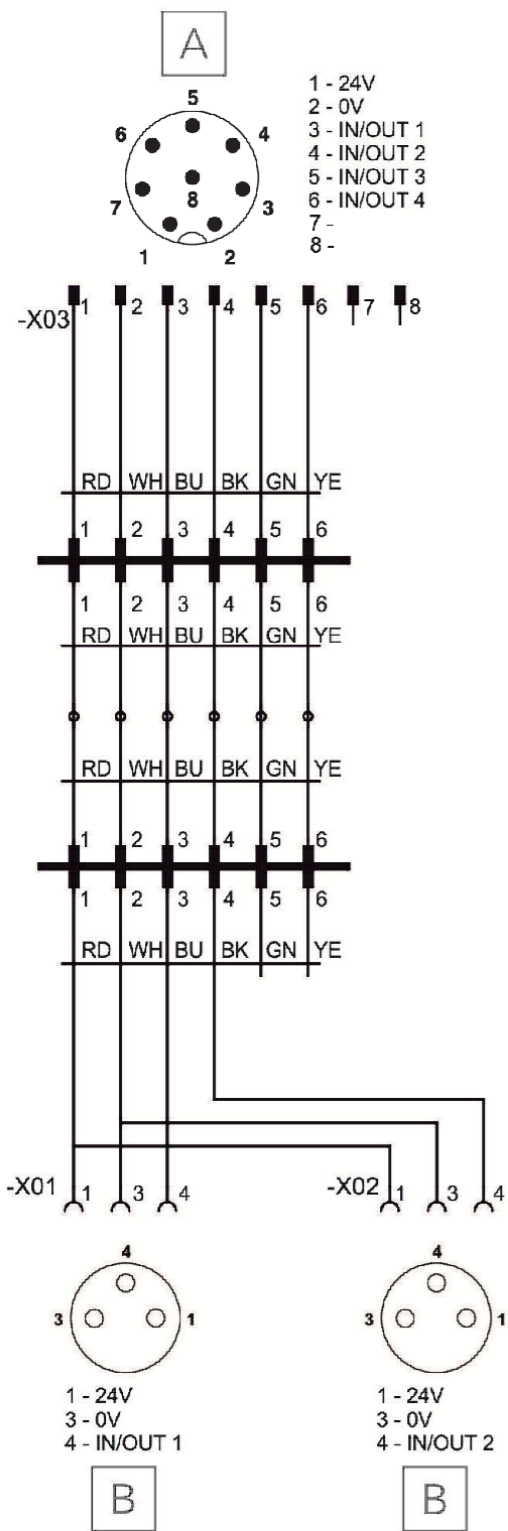
2 aktive Rotationsbewegung / active rotary motion passive Rotationsbewegung / passive rotary motion



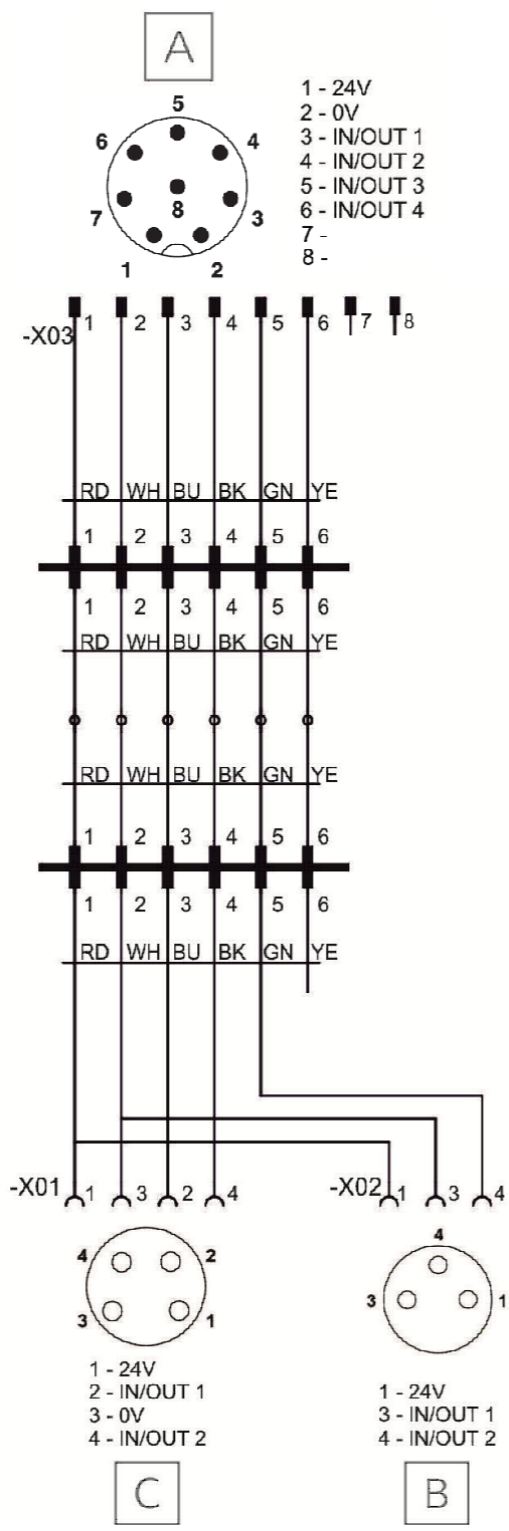
Alle Rechte vorbehalten / all rights reserved - ISO 16016

INDEX / Vorg Nr / ope Nr; ÄNDERUNG / change:		DATUM/date	NAME	
Allgemeintoleranzen / general tolerances: DIN ISO 2768-1: m (mittel/middle); DIN ISO 2768-2: Toleranzklasse/tolerance class H		27.08.2024	Fritzsche	
Bezeichnung / designation:		ARTIKEL-NR / Item-No:		INDEX
Schwenkarmmodul Swivel arm module		1800216		FORMAT 2
Bezeichnung 2: Typ: rotaryARM 4079#		MAßSTAB / scale: 1:2		BLATT / sheet 5 / 7
		Ursprung:		

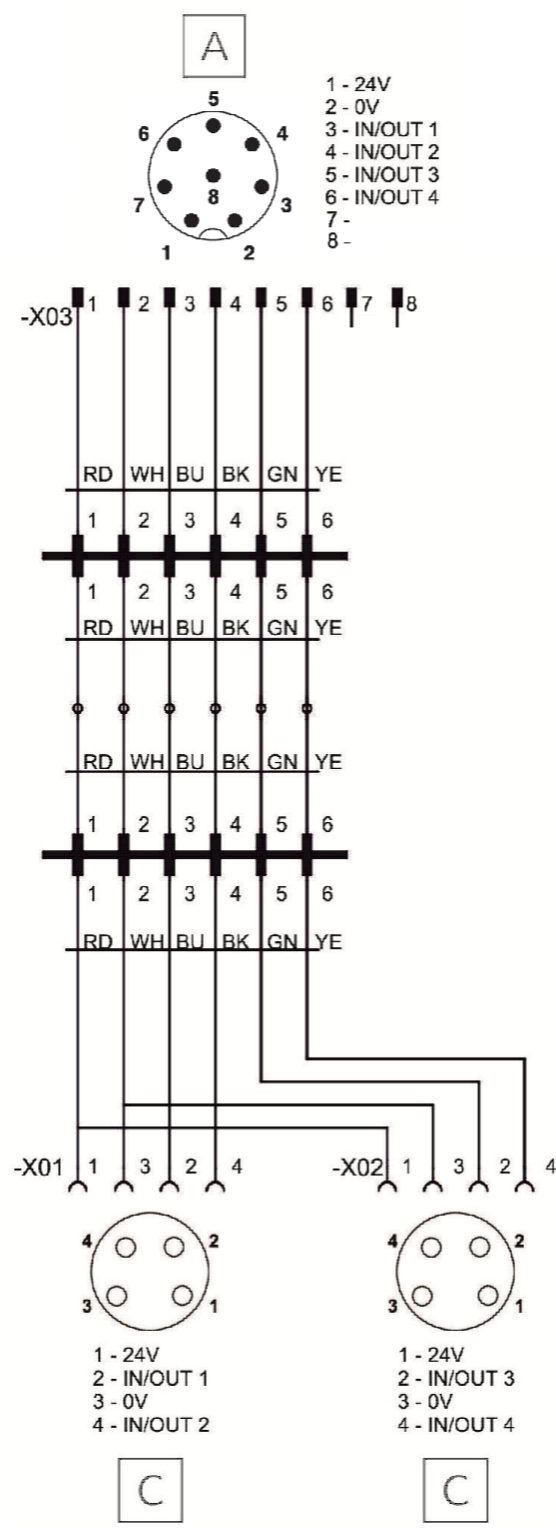
V1



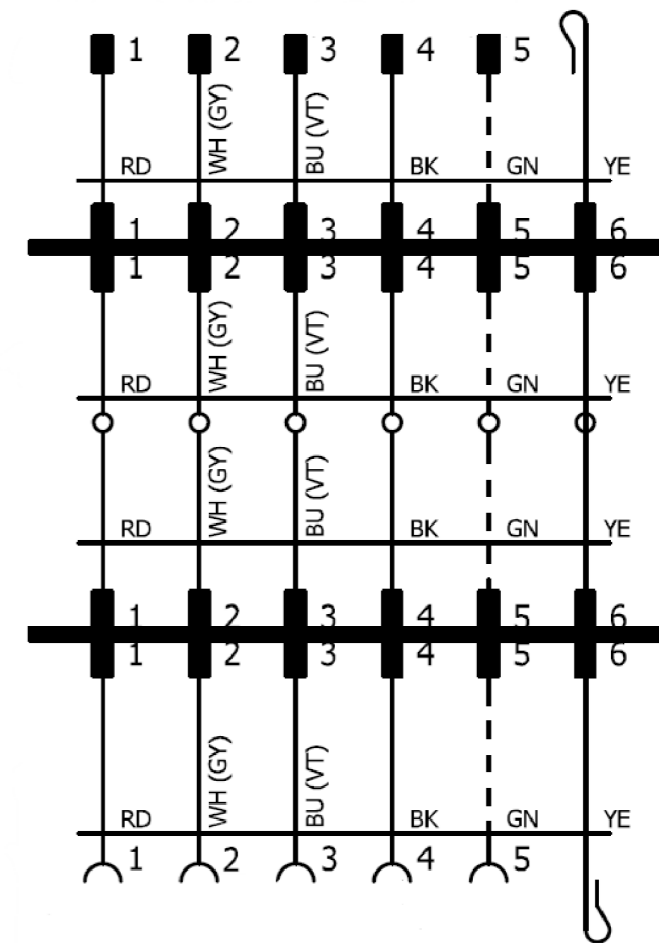
V2



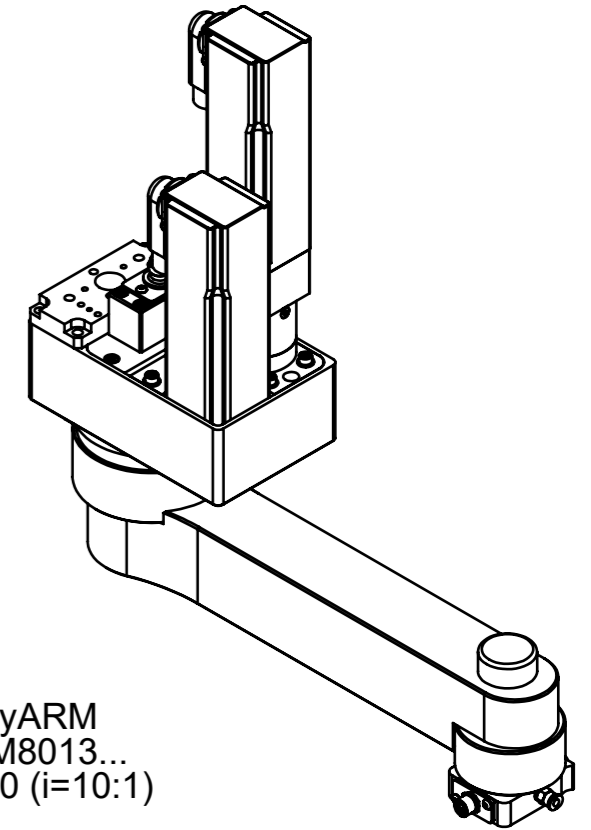
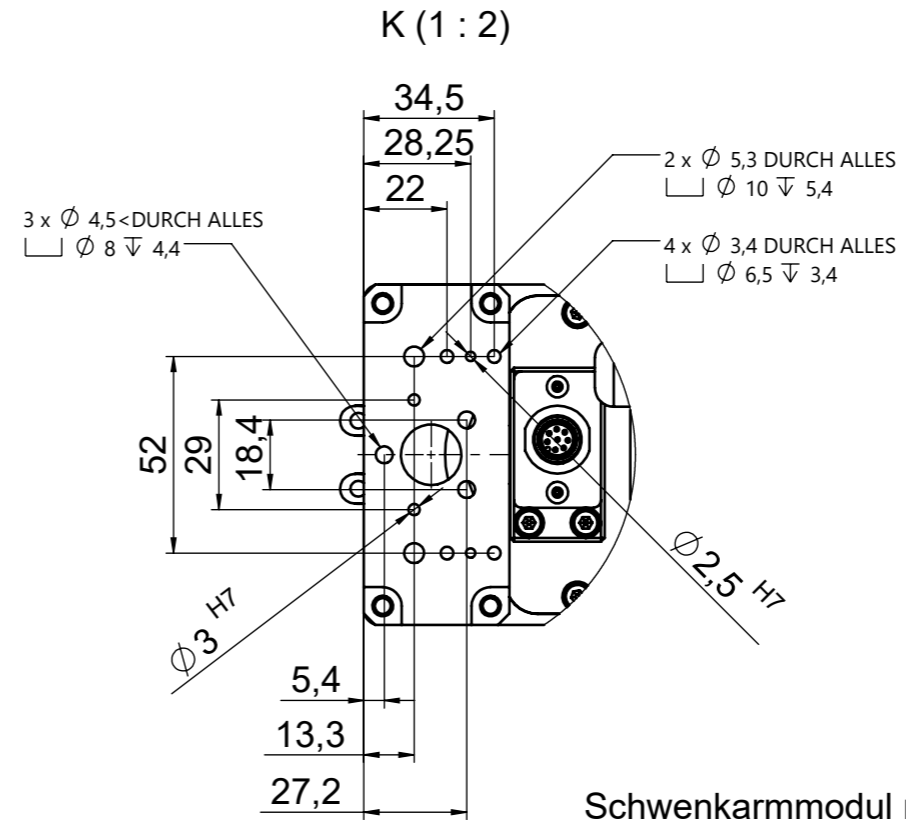
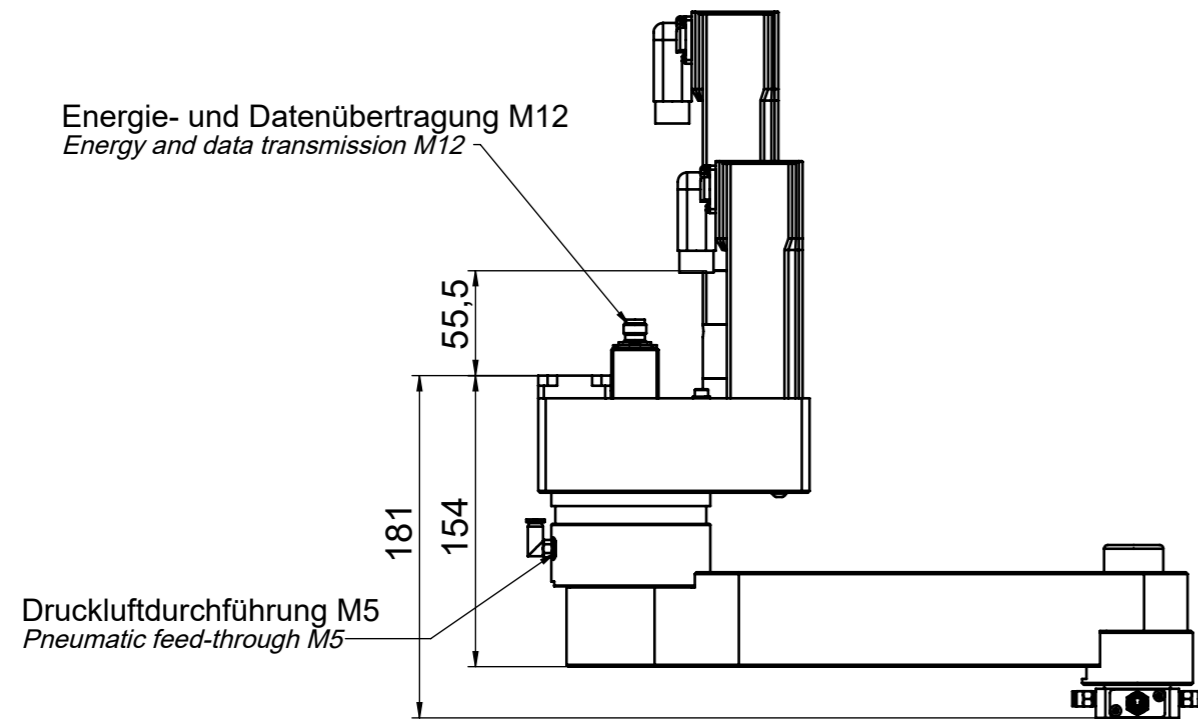
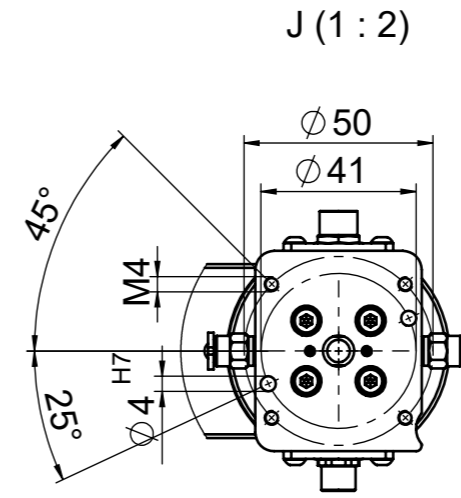
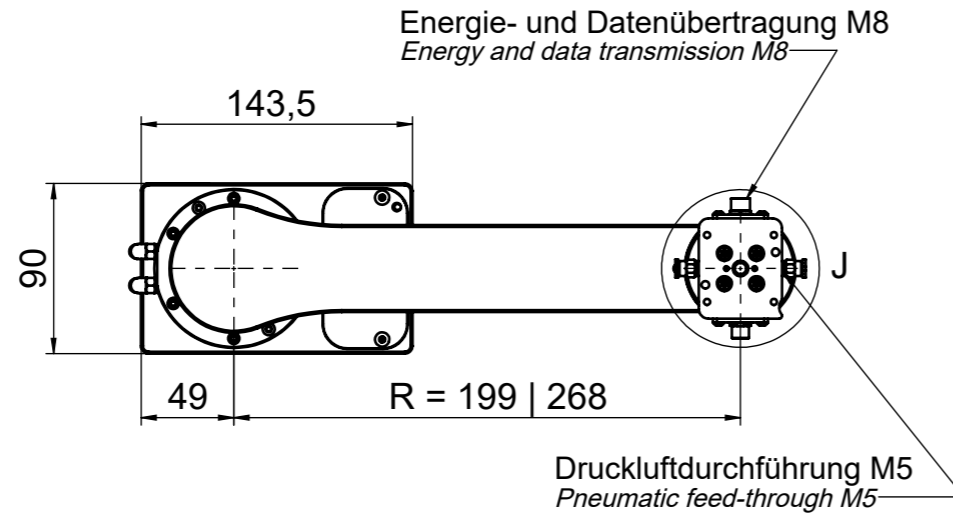
V3



V4

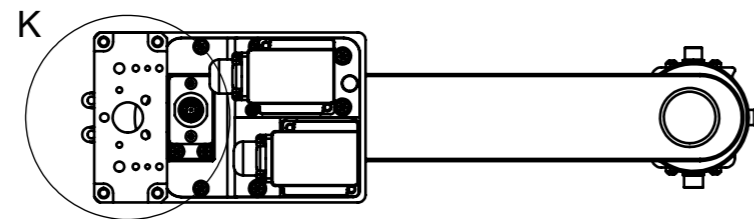


INDEX Vorg Nr / ope Nr. ÄNDERUNG / change:		DATUM/date	NAME			
Allgemeintoleranzen / general tolerances DIN ISO 2768-1: m (mittel/middle) DIN ISO 2768-2: Toleranzklasse/tolerance class H		BEARB / editor: GEPR / check:	27.08.2024		Fritzsche	
Bezeichnung / designation:				ARTIKEL-NR / Item-No:	INDEX	FORMAT
Schwenkarmmodul Swivel arm module				1800216	-	2
				MAßSTAB / scale: 1:2		BLATT / sheet 6 / 7
Bezeichnung 2: Typ: rotaryARM 4079#				Ursprung:		

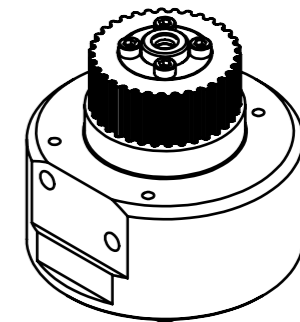
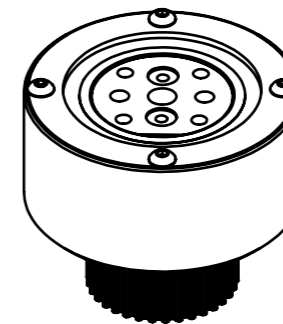
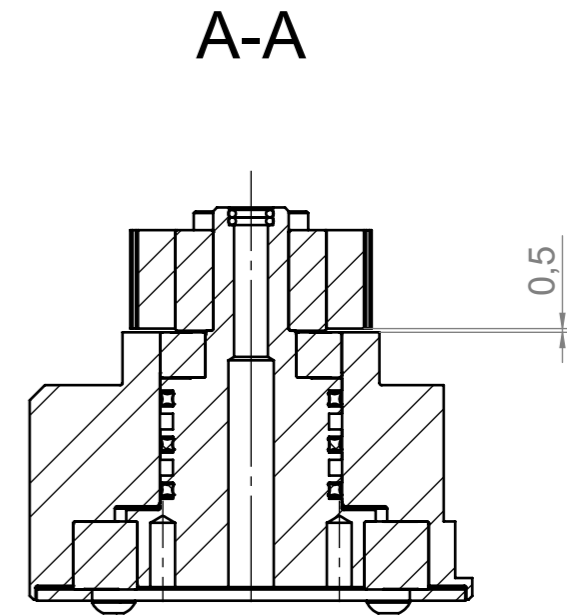
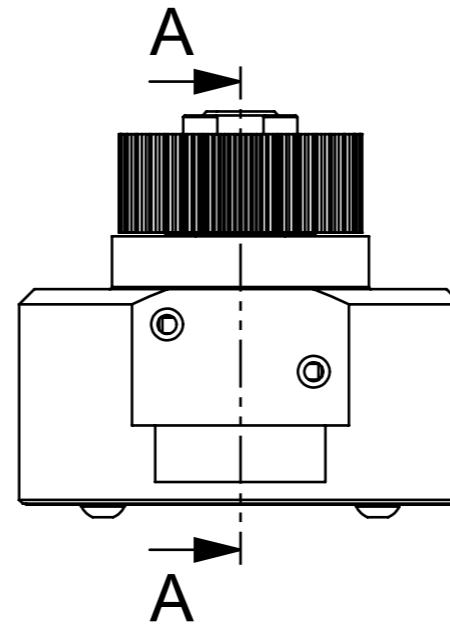
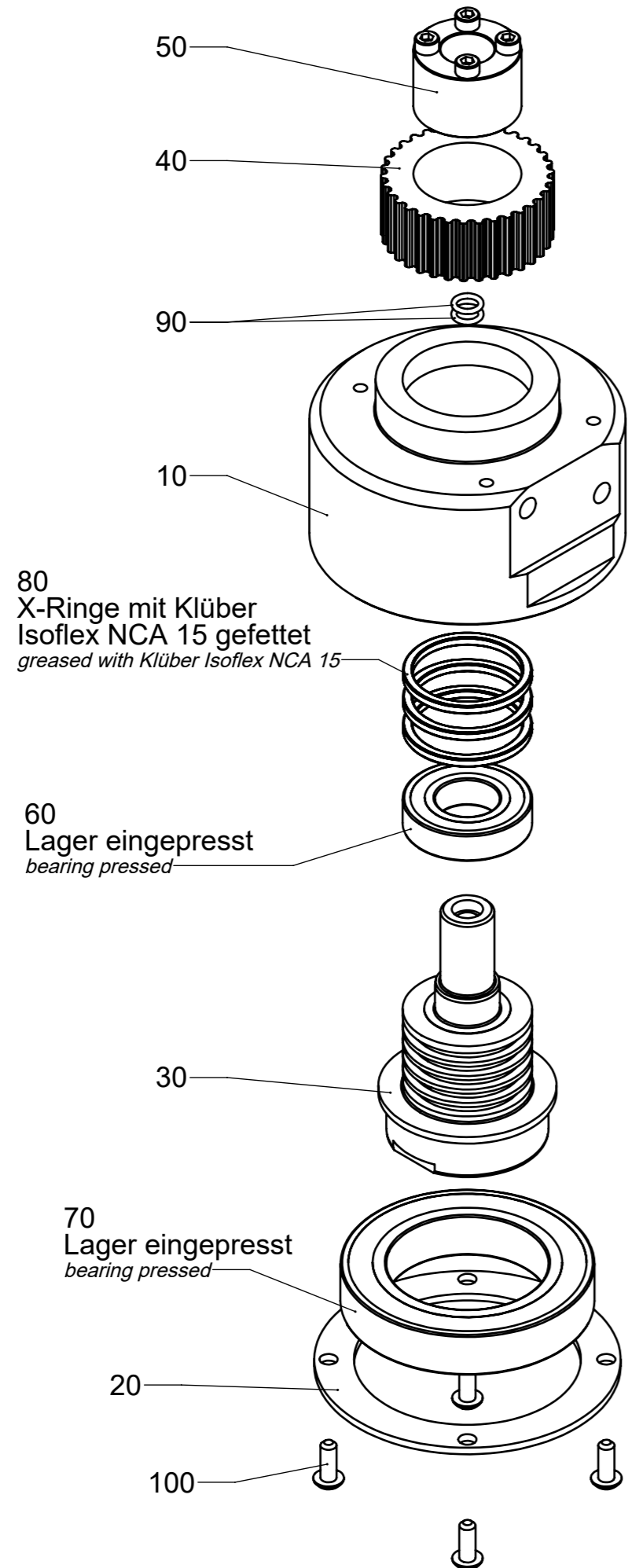



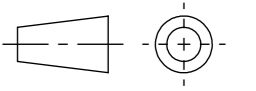
Schwenkarmmodul rotaryARM
 Motor.: vorbereitet für AM8013...
 Planetengetriebe: PLE 40 (i=10:1)

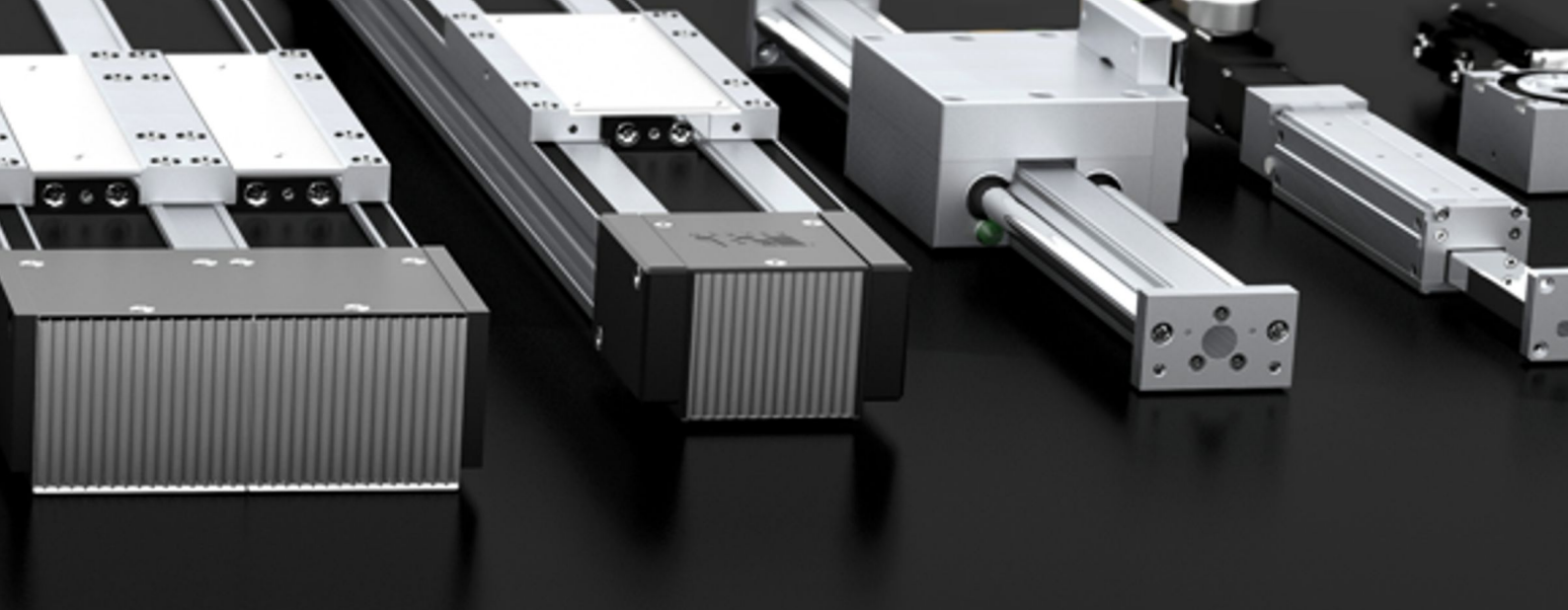
Schwenkradius: 199 / 268 mm



INDEX Vorg Nr / ope Nr. ÄNDERUNG / change:		DATUM/date	NAME		
Allgemeintoleranzen / general tolerances DIN ISO 2768-1: m (mittel/middle) DIN ISO 2768-2: Toleranzklasse/tolerance class H		BEARB / editor: GEPR / check:	27.08.2024		Fritzsche
Bezeichnung / designation:			ARTIKEL-NR / Item-No:	INDEX	FORMAT
Schwenkarmmodul Swivel arm module			1800216	-	2
			MAßSTAB / scale: 1:2	BLATT / sheet 7 / 7	
Bezeichnung 2: Typ: rotaryARM 4079#			Ursprung:		



INDEX Vorg Nr / ope Nr. ÄNDERUNG / change:		DATUM/date	NAME	
Allgemeintoleranzen / general tolerances DIN ISO 2768-1: m (mittel/middle) DIN ISO 2768-2: Toleranzklasse/tolerance class H		BEARB / editor: 21.03.2024	Fritzsche	
WERKSTOFF / material: -		GEPR / check: 26.11.2025	Fritzsche	
Bezeichnung / designation: Drehdurchführung kpl. Rotary feed-through cpl.			ARTIKEL-NR / Item-No: 1322524	
Bezeichnung 2:			MAßSTAB / scale: 1:1	FORMAT 3
			BLATT / sheet 1 / 1	
Ursprung: -				



IEF-Werner GmbH
Wendelhofstraße 6
Germany-78120 Furtwangen
Telephone: +49 7723-925-0
info@ief-werner.de